

WRANGLER WORKWEAR

PRODUCT CATALOGUE 2026
STOCK ASSORTMENT

Wrangler

WORKWEAR

Index

Heritage	3
Longevity	4
Clinic	5
Work Trousers	11
Casual Trousers	23
Outerwear	37
Fleece & softshell	41
Sweatshirts & Hoodies	45
Shirts	48
Base layers	50
T-shirts & Polos	53
Accessories	58
	65
PRO Overview	69
Heritage Overview	71
Accessories Overview	74
Size Guide / How to measure	75

Heritage



1904-1916

Blue Bell Overall Company

C.C. Hudson and his brother, Homer, formed the Hudson Overall Company on South Elm Street in Greensboro. Sales of Hudson overalls are booming. The company moves to larger headquarters and changes its name to Blue Bell Overall Company and wet by transporting moisture away from the body. We offer base layer products depending on season and climate.



1943

Casey Jones and Wrangler

Blue Bell acquires Casey Jones Company, a manufacturer of work-clothing, and, with it, the rights to Casey Jones' rarely used brand name – Wrangler



1947

Wrangler

Wrangler authentic western jeans, designed by celebrity tailor Rodeo Ben, are introduced to the American consumer e body.



1962

Blue Bell Belgium and Wrangler European launch

Blue Bell opens a plant in Belgium and the Wrangler brand is successfully launched in Europe.

Longevity

For the people and the planet.

We cooperate with several organisations to improve the working environment, the security of our co-workers, the handling of chemicals and the awareness of environmental issues.

Our vision is to create a holistic, sustainable and safe product that contributes to success and well-being for both people and planet.

We create value by offering comprehensive product solutions that last over time and are designed and produced with people and the environment in focus.

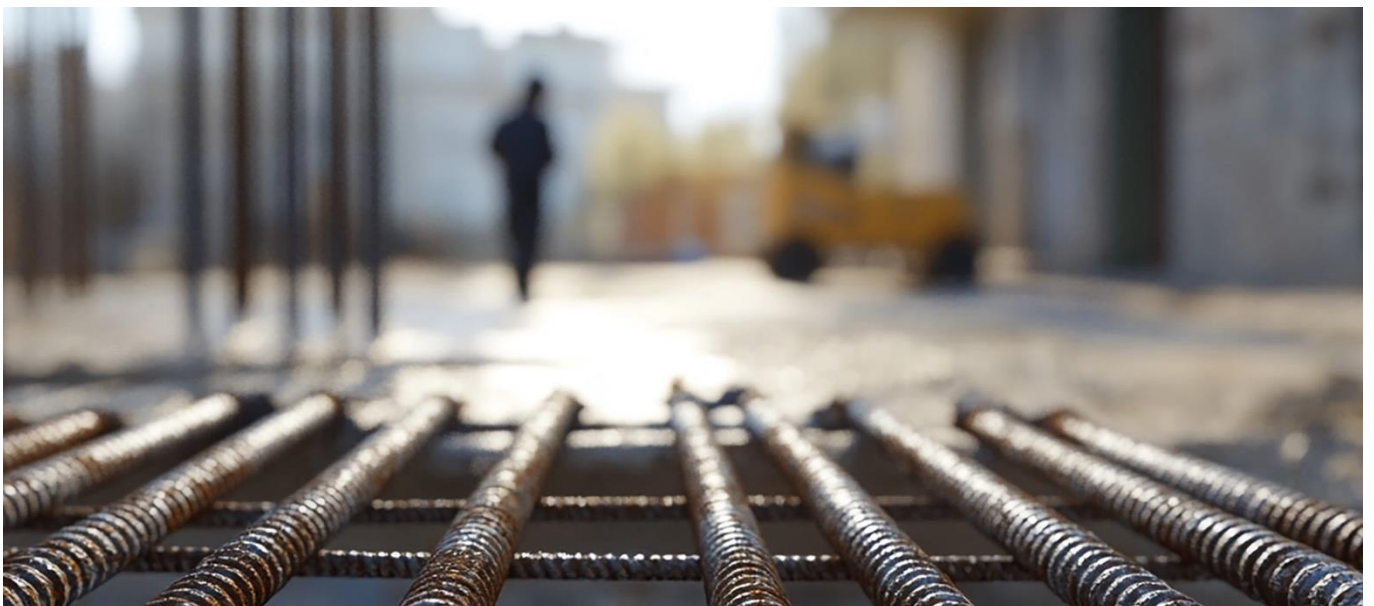
We work to offer environmentally friendly products that inspire a sustainable lifestyle and longevity use of the earth's resources. Through good communication and openness, we must work for a high level of trust and confidence.

Durable Workwear

Explore our collection of workwear designed to endure. Constructed from high-quality materials and reinforced with superior craftsmanship, our garments are built to last through the toughest conditions. Ideal for professionals who demand reliability and durability, our workwear ensures long-lasting performance and sustained comfort. Invest in pieces that are as resilient as you are, available now in our latest product catalog

Product liability

Experience the difference with our workwear, where every fabric, trim, and detail is meticulously crafted to meet the specific demands of professional environments. Our garments are engineered with functionality in mind, ensuring that each piece not only meets but exceeds the rigorous requirements of daily wear in challenging conditions. Trust in our thoughtfully designed workwear to deliver unparalleled durability and comfort



Clinic

Constructed to support your work, the Wrangler Workwear collection comes with specific functions and technologies.

The functional foundation of Wrangler Workwear is built upon layering garments. To ensure top performance, market leading technologies from known brands such as Cordura®, Primaloft®, Polartec® and 37.5 are used for specific garments.

From the smaller projects to the big industrial endeavors Wrangler workwear® offers dependable and comfortable clothing. Let's go through some of the vocabulary we use.

Layering

The Wrangler workwear® collection incorporates a three-layer system for different climates and all seasons. This system ensures maximal function with minimal shelf keeping units.



Base - Layer 1

Closest to the body as a second skin it's main purpose is to avoid cold and wet by transporting moisture away from the body. Choose base layer products depending on season and climate.

Middle - Layer 2

Regulates temperature. Wrangler workwear® offers different options to match all seasons and your specific situation.

Shell - Layer 3

The outer shell offers weather protection. Choose from a selection of water repellent and windproof shell jackets and water-proof, breathable outerwear for protection against foul weather year around.



Water repellent

The surface of the garment is treated with a durable water repellent (DWR). The durability depends on many factors but a general rule is approx. 80% of efficiency after 20 washes.

Water proof

In addition to the DWR treatment the fabric is backed with a water resistant yet breathable membrane. Each seam is sealed with inside tape.



4-Way vs. 2-Way stretch

Stretch function can be applied vertically, horizontally or both directions. In a 2-way stretch fabric the elasticity is either vertically or horizontally. A 4-way stretch fabric is elastic in both directions, allowing for unrestricted movement.

Stretch Panels

To keep integrity and stability of a garment for heavy duty work we utilize 4-Way stretch panels at areas where flexibility and unrestricted movement is needed, such as crotch and knees.

Reinforcements

To ensure strength and longevity the Wrangler Workwear garments are reinforced in different ways. The main reinforcements can be categorized into three categories:

Textile

The textile reinforcements are applied at specific parts where the garment is subjected to extra wearing and tearing. The PRO garments are reinforced with CORDURA® fabrics. To increase tear strength of our 1X1 plain weave fabrics they have reinforced interwoven warp and weft threads at specific intervals, this technique is called Rip-Stop.

Metal

The traditional metal rivets have been a part of Wrangler Workwear since it's beginning. These metal reinforcements are used at specific stress-points, mainly at pockets. They secure multiple layers of fabric together, creating a stronger and more durable bond. This reinforcement prevents the fabric from tearing or fraying, even under heavy use.

Stitching

Tripple stitched flat felled seams and bartacks. A bar tack stitch is made up of closely spaced zig-zag stitches that strengthen parts of a garment that are likely to experience stress or wear. This is the strongest among all examples of tacking stitches.



Premium trademarks and technologies



bluesign®

A comprehensive sustainability solution that provides a holistic approach for safe and environmentally friendly textile production, working at each step of the supply chain to ensure that products meet rigorous benchmarks with focus on People, Environment and Resources.



POLARTEC®

The Cornerstone of fleece insulation, Polartec® is a famous manufacturer of lightweight and warm fleece, which is known for performance, durability and aesthetics. Main benefits for using Polartec® are warmth without high additional weight, high breathability, packable and fast drying.



CORDURA®

Durable. Versatile. Reliable. If It's Made With CORDURA® Fabric, It's Made To Last. CORDURA® fabrics are the perfect combination of durability, versatility and reliability. For more than 40 years, people who love the outdoors have relied on CORDURA® fabrics to be as rugged as they are.



PRIMALOFT®

You don't see PrimaLoft. You don't need to. PrimaLoft creates premium insulations and fabrics felt by you and the planet. PrimaLoft has spent over 40 years developing innovative insulations and fabrics to keep you warm, dry and comfortable. We like to consider ourselves the secret ingredient that powers your favorite jackets, gloves, footwear, bedding and more.



37.5

37.5® Technology offers sustainable temperature regulating materials for clothing, home goods, footwear, and more. 37.5® Technology uses natural minerals to create the ultimate temperature control fabrics, insulations, foams, and laminates.



YKK

YKK is the world's largest zipper manufacturer and makes incredibly dependable zippers, trusted world-wide for their impeccable production standards and thorough quality control processes.



COOLMAX®

Moisture wicking technology made from polyester, this fiber helps consumers stay cool and dry with long-lasting freshness.

Garment Care

We do what we can to ensure that our production affects the environment as little as possible. Throughout its lifetime, a textile affects the environment, but there is a lot you can do to reduce the burden.

Wash less

Only wash clothes that are dirty. Air, brush and remove small stains with a damp cloth instead of machine washing. In this way, you contribute to less resource use.

Filled machine

Always wash with a full machine, but not too full. You should be able to hold a fist above the dirty laundry without squeezing the clothes. This means that the content is just right.

Low temperatures

Always use as low a temperature as possible when washing. Our garments are marked with the maximum allowed temperature, but sometimes the clothes are not that dirty and it doesn't take that hot water to get them clean. Feel free to try 30° or 40°

Detergent and dosage

Use an environmentally-labeled detergent free of phosphates and optical brighteners. Do not overdose, but always follow the dosage on the package. Too much detergent can deteriorate the washing and this means that the washing machine finds it difficult to rinse out.

Air dry

Do not use the tumble dryer unnecessarily. It consumes a lot of energy and wears a lot on the clothes.

Avoid dry cleaning

Solvents traditionally used in dry cleaning have a negative impact on the environment. Today there are more environmentally friendly dry cleaners that clean the clothes with only water and recycled carbon dioxide, this means that fewer harmful emissions are made, ask how your dry cleaner works.



Washing Instructions

How to wash your Wrangler Workwear® garment:

Make sure you zip up all zippers to avoid any surface damage. Wash your product with warm water as instructed on the care label.

Do not use fabric softener or other detergents that have softening agents, as it will reduce the fabric surface tension and will have a negative effect on the fabric performance.

It is advised to follow the instructions given by that product and to use a liquid washing product with no additives (without perfume, foam or softener).

A second rinse cycle with water is preferred to remove any detergents that might be left behind on the surface. It is important to remove excess detergent, as it might affect the performance of the fabric.

Durable Water Resistance (DWR) treatment:

How to re-activate

After washing, you can safely tumble dry your Wrangler Workwear® garment in order to re-activate the DWR treatment. Please always follow the garment care label for drying instructions.

Wash

Do not wash	
Hand Wash	
Machine Washable, Synthetics cycle	
Machine Washable, Gentle/Wool wash	
Wash Cold, 30°C	
Wash warm, 40°C	
Wash hot, 60 °C	
Wash hot, 95°C	

Iron

Iron, low temperature - max 110°C/230°F	
Iron, medium temperature - max 150°C/300°F	
Iron, high Temperature - max 200°C/390°F	
Do not Iron	

Dry

Tumble dry, low heat	
Tumble dry, medium heat	
Do not tumble dry	
Hang dry	
Drip dry	
Flat dry	

Dry Clean

Any solvent	
Any solvent except tetrachloroethylene	
Any solvent except tetrachloroethylene, limited cycle	
Petroleum solvent only	
Petroleum solvent only, limited cycle	
Do not dry clean	

Bleach

Chlorine bleaching allowed	
Do not bleach	

Work Trousers

Functional workwear with specialized details, pockets, comfort and protective details. Different kind of work requires different types of trousers. From fully loaded PRO models to contemporary universal 4-way stretch work trousers, Wrangler Workwear offer a wide range of models.



MEN'S PRO UNIVERSAL TROUSERS

- YKK ZIPPER
- CORDURA REINFORCED FRONT HAND POCKET OPENING
- CORDURA REINFORCED CARGO POCKET
- CORDURA REINFORCED RULER POCKET WITH KNIFE BUTTON
- CORDURA REINFORCED HAMMER LOOPS AT WAISTBAND
- ZIP POCKETS ON EACH LEG
- SHAPED WAISTBAND, HIGHER AT BACK WITH LIGHT PADDING
- ID-CARD LOOP
- CORDURA KNEEPAD POCKETS ACCESSIBLE FROM OUTSIDE
- 4-WAY STRETCH PANEL IN KNEEPAD POCKETS FOR COMFORT
- 4-WAY STRETCH GUSSET IN CROTCH, FREEDOM OF MOVEMENT
- PFC-FREE



Wrangler

WORKWEAR



PRO Stretch Universal Trousers 8600047

Colours: Black,
Sizes: W: 26-40 / L: 30-34
Fit: Regular

Fabrics

Main fabric: 94% nylon, 6% elastane

Reinforcement: 100% nylon Cordura®

Stretch Panels: 91.5 % nylon, 8.5% elastane

Knee pockets: 100% polyester oxford Cordura® stretch



MEN'S PRO HOLSTER TROUSERS

- YKK ZIPPER
- FRONT HAND POCKETS UNDER HOLSTER POCKETS
- CORDURA REINFORCED HOLSTER POCKETS WITH ZIPPERS
- WEBBING TOOL-BAND ON HOLSTER POCKET
- CORDURA REINFORCED LEG CARGO POCKET
- CORDURA REINFORCED RULER POCKET WITH KNIFE BUTTON
- CORDURA REINFORCED HAMMER LOOPS AT WAISTBAND
- BACK POCKETS IN CORDURA WITH SIGNATURE STITCHING
- ID-CARD LOOP
- ARTICULATED KNEES
- CORDURA KNEEPAD POCKETS ACCESSIBLE FROM OUTSIDE
- 4-WAY STRETCH PANEL IN KNEEPAD POCKETS FOR COMFORT
- 4-WAY STRETCH GUSSET IN CROTCH, FREEDOM OF MOVEMENT
- PFC-FREE



Wrangler

WORKWEAR



PRO Stretch Holster Trousers 8600053

Colours: Black,
Sizes: W: 26-40 / L: 30-34
Fit: Regular

Fabrics

Main fabric: 94% nylon, 6% elastane

Reinforcement: 100% nylon Cordura

Stretch Panel: 91.5% nylon, 8.5% elastane

Knee pockets: 100% polyester oxford Cordura® stretch





Men's Casual Trousers

Where all the pockets aren't needed, yet all the comfort, strength and performance is expected.

Wrangler

WORKWEAR



Twill Service Trousers 8600060

Colours: Black,

Sizes: W 26-40/ L : 30-34

Fit: Regular

Fabric: 70% cotton, 28% polyester,
2% elastane twill

- YKK Zip fly
- Slanted front hand pockets
- Adjustable waist straps
- Back pockets with flaps and buttons
- Straight leg
- Back pockets in cordura with signature stitching
- Gusset in crotch
- PFC-free



Outerwear

Weather protection all year around.
Layer for your specific need.

Wrangler

WORKWEAR



Men's Pro Winter Jacket 8600005

Colours: Black
 Sizes: XS, S, M, L, XL, 2XL, 3XL
 Fabric
 Main fabric: 100% Polyamide (GRS) Padding: 100gr
 Primaloft® Black Rise 100% Polyester

- Waterproof 20.000mm water pillar
- Breathable 20.000g/24h
- DWR C0 finish
- Fully taped seams
- Insulated with 100gr Primaloft® padding
- Reflective details at hood and sleeves
- 2-way adjustable hood
- 4 hand warming pockets with zipper
- 2 cargo pockets with flap and velcro
- Inside pocket with zipper
- Inside fleece panels for comfort
- Draw cord at bottom hem
- Adjustable sleeve cuffs
- YKK Zipper
- PFC-free



Men's Pro Shell Jacket 8600004

Colours: Black
 Sizes: XS, S, M, L, XL, 2XL, 3XL
 Fabric
 Main fabric: 100% nylon Rip-Stop, 3 layer fabric

- Waterproof 20.000mm water pillar
- Breathable 20.000g/24h
- DWR C0 finish
- Fully taped seams
- Reflective details at hood and sleeves
- 2-way adjustable hood
- 2 hand pockets with zipper
- 1 chest pocket with zipper
- Inside placket with fleece for comfort
- Draw cord at bottom hem
- Adjustable sleeve cuffs
- YKK Zipper
- PFC-free



Men's Pro Warming Jacket 8600003

Colours: Black, Dk Grey
 Sizes: XS, S, M, L, XL, 2XL, 3XL
 Fabric
 Main fabric: 100% Polyamide (GRS) Padding: 100% Polyester
 Primaloft®



- Warm mid-layer under shell jacket
- Dry weather stand alone jacket
- Reflective details at sleeves
- 2 hand pockets with zipper
- 1 inside pocket with zipper
- Inside placket with chin guard for comfort
- Draw cord at bottom hem
- Adjustable sleeve cuffs
- YKK Zipper
- PFC-free





Men's Pro Warming Vest 8600010

Colours: Black

Sizes: XS, S, M, L, XL, 2XL, 3XL

Fabric

Main fabric: 100% Nylon (GRS),
ripstop Padding: 100% Polyester
Primaloft®

- Warming mid-layer under shell jacket
- Stand alone vest
- Reflective details at back
- 2 hand pockets with zipper
- 1 inside pocket with zipper
- Inside placket with chin guard for comfort
- Draw cord at bottom hem
- Adjustable sleeve cuffs
- YKK Zipper
- PFC-free





Unisex Rain Suit Jacket 8600086

Colours: Black

Sizes: XS, S, M, L, XL, 2XL, 3XL

Fabric

Main fabric: 100% polyester (GRS)

Main lining: 100% Polyester

Sleeve lining: 100% Polyester (GRS)

- Waterproof 5.000mm water pillar
- Breathable 5.000g/24h
- DWR C0 finish
- Fully taped seams
- Adjustable hood
- 2 hand pockets with flaps
- Draw cord at bottom hem
- Adjustable sleeve cuffs
- YKK Zipper



Unisex Rain Suit Trousers 8600087

Colours: Black

Sizes: XS, S, M, L, XL, 2XL, 3XL

Fabric

Main fabric: 100% polyester (GRS)

Main lining: 100% Polyester

- Waterproof 5.000mm water pillar
- Breathable 5.000g/24h
- DWR C0 finish
- Fully taped seams
- Adjustable waist
- 2 hand pockets with zippers
- Adjustable bottom leg

Fleece & Softshell

Warming, wind resistant, light weight, quick dry, very breathable, there are many options with different technologies and functions to choose from.

Wrangler

WORKWEAR



Men's Pro Softshell Jacket 8600007

Colours: Black, Dk Grey

Sizes: XS, S, M, L, XL, 2XL, 3XL

Fabric

Main fabric: 90% rec. polyester, 10% spandex Polartec®

- Breathable mid-layer under shell jacket
- Dry weather standalone jacket
- Polartec hardface
- Increased abrasion resistance and water repellency
- Reflective details at sleeves
- 2 hand pockets with zipper
- 1 inside pocket with zipper
- Inside placket with chin guard for comfort
- Draw cord at bottom hem
- Adjustable sleeve cuffs
- YKK Zipper

• PFC-free



Men's Pro Wind Fleece Jacket 8600015

Colours: Black

Sizes: XS, S, M, L, XL, 2XL, 3XL

Fabric

Main fabric: 100% polyester Polartec®

- Polartec® Windpro®
- Wind resistant
- Water repellent DWR finish
- Chest pockets in Rip-Stop
- Rip-Stop reinforced elbows
- 4 hand warming pockets with zipper
- YKK Zipper





Men's Hybrid Softshell Jacket 8600009

Colours: Black, Dk Grey

Sizes: XS, S, M, L, XL, 2XL, 3XL

Fabric

Padded fabric: 100% nylon

Softshell: 95% polyester 5% elastane
bonded with 100% polyester

Padding: 100% polyester

- Warming
- Stretching panels for freedom of movement
- 2 hand pockets with zipper
- 1 inside pocket with zipper
- Inside placket with chin guard for comfort
- Draw cord at bottom hem
- YKK Zipper



Men's Hybrid Body Warmer 8600012

Colours: Black, Dk Grey

Sizes: XS, S, M, L, XL, 2XL, 3XL

Fabric

Padded fabric: 100% nylon

Softshell: 95% polyester 5% elastane
bonded with 100% polyester

Padding: 100% polyester

- Warming
- Stretching panels for freedom of movement
- 2 hand pockets with zipper
- 1 inside pocket with zipper
- Inside placket with chin guard for comfort
- Draw cord at bottom hem
- YKK Zipper





Men's Padded Shirt Jacket 8600016

Colours: Red, White, Khaki
Sizes: XS, S, M, L, XL, 2XL, 3XL

Fabric

Main fabric: 100% Polyester

(GRS) Lining fabric: 100%

Polyester (GRS) Padding: 100%
Polyester

- Padded fleece shirt-jacket
- Hidden zip-pockets at sides
- Snap buttons at front
- Two chest pockets



Sweatshirts & Hoodies

PRO models with extra pockets and features, classics that never gets old, loopwheeler and french terry, these are the ones we never leave without.

Wrangler

WORKWEAR

Men's Classic Hoodie 8600020



Colours: Black, Dk Grey, Red, Navy
Sizes: XS, S, M, L, XL, 2XL, 3XL
Fabric: 80% Cotton (OCS), 20%
Polyester (RCS) french terry,
brushed inside

- Classic belly pocket
- Double layer hood
- 2X2 Rib at cuffs and hem



Shirts

Timeless workshirts with comfort and practical details.

Wrangler
WORKWEAR



Men's Denim Shirt 8600026

Colours: Indigo blue
Sizes: XS, S, M, L, XL, 2XL, 3XL
Fabric: 100% cotton,
10oz indigo denim

- Timeless western shirt
- Back and front yokes
- 2 chest pockets with buttons
- Pen compartment at left chest pocket
- Snap button at front

Base Layers

Closest to the body as a second skin it's main purpose is to avoid cold and wet by transporting moisture away from the body. Products with air flow design facilitate movement of the air closest to the body for extra comfort.

Wrangler

WORKWEAR



Men's Pro Tech Long Sleeve Tee 8600030

Colours: Black
Sizes: XS, S, M, L, XL, 2XL, 3XL
Fabric: 100% polyester,
37.5 Technology, 160gsm

- 37.5 Tech temperature regulating fabric
- Cotton touch
- Quick dry



Men's Pro Tech Short Sleeve Tee 8600031

Colours: Black
Sizes: XS, S, M, L, XL, 2XL, 3XL
Fabric: 100% polyester,
37.5 Technology, 160gsm

- 37.5 Tech temperature regulating fabric
- Cotton touch
- Quick dry



T-shirts & Polos

A range of durable and dependable staples in different fabrics and weights. Choose from plain colours or graphic prints.

Wrangler

WORKWEAR

Men's Pro Heavy Graphic Tee 8600033



Colours: Black, Grey Melange
Sizes: XS, S, M, L, XL, 2XL, 3XL
Fabric: 100% Cotton
(OCS) Heavy 300 gsm
single jersey

- Heavy duty t-shirt
- 2X2 rib crew neck
- Logo print at chest



Men's Classic SS Tee 8600040



Colours: Black, White, Navy, Red,
Grey melange, Dk grey
Sizes: XS, S, M, L, XL, 2XL, 3XL
Fabric: 60% Cotton (OCS), 40%
Polyester (RCS)
180 gsm single jersey

- 1X1 rib crew neck
- 1X1 rib sleeve cuffs
- Small logo at chest
- Big logo at back
- Slits in sides



Men's Graphic Front Tee 8600037



Colours: Navy, White
Sizes: XS, S, M, L, XL, 2XL, 3XL
Fabric: 60% Cotton (OCS), 40%
Polyester (RCS)
180 gsm single jersey

- 1X1 rib crew neck
- Graphic chest print



Accessories

All the little things that matter.



Wrangler

WORKWEAR



Mesh Cap 8600088

Colours:
Black/Dk Grey, Khaki/Offwhite,
Navy/Khaki, Red/Offwhite

Sizes: One size

Fabric:

Front 100% cotton canvas, 350 gsm,
waxed oil finish. Back 100% polyester
mesh, 105 gsm

- Snap back
- Airy mesh for ventilation
- Logo at forehead



Twill Cap 8600089

Colours:
Black, Offwhite, Red

Sizes: One size Fabric:
100% Cotton

- Snap back
- Logo at forehead



Rib Knitted Beanie 8600090

Colours:
Black, Red, Grey melange

Sizes: One size

Fabric: 98% Cotton, 2% Elastane

- Heavy rib knitted
- Logo patch



Basic Knitted Beanie 8600091



Colours:
Black, Red, Grey melange, Navy
Sizes: One size
Fabric: 100% Acrylic

- 1X1 rib knitted
- Logo patch





Work Sock 3-Pack 1 8600100

Colours:
White/Grey melange, Dk Grey melange/Grey melange, Black/Dk Grey

Sizes: 5-8 (38-41) / 8-10 (41-44)

Fabric: 85% Cotton, 10% nylon, 5% spandex

- Shaped for comfort
- Tighter knit at foot arch to keep sock in place during hard work
- Block stripe

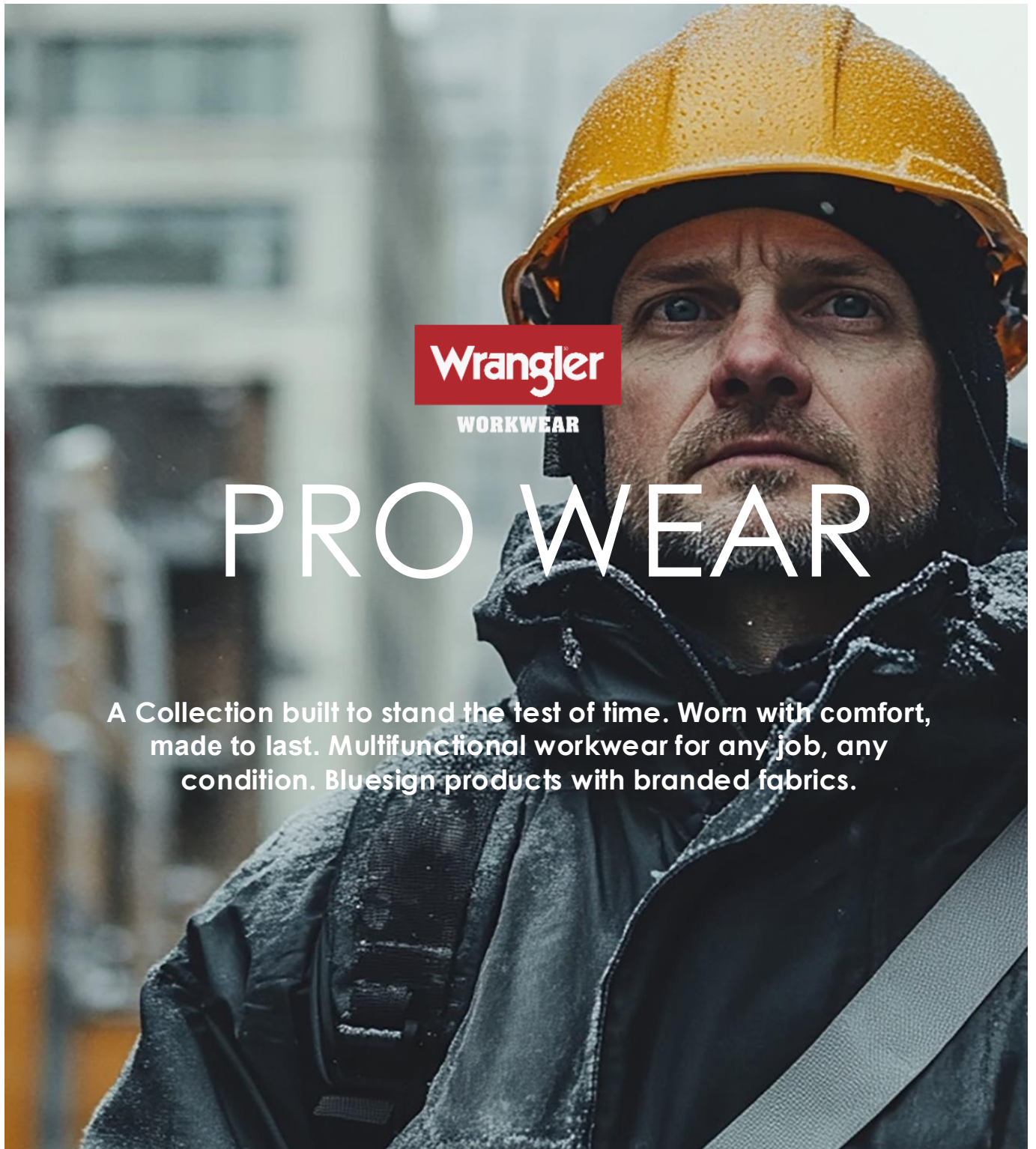


Sneaker Work Sock 3-Pack 1 8600097

Colours:
White/Grey melange, Dk Grey melange/Grey melange, Black/Dk Grey
Sizes: 5-8 (38-41) / 8-10 (41-44)
Fabric: 85% Cotton, 10% nylon, 5% spandex

- Shaped for comfort
- Tighter knit at foot arch to keep sock in place during hard work

PRO Overview



Wrangler

WORKWEAR

PRO WEAR

A Collection built to stand the test of time. Worn with comfort, made to last. Multifunctional workwear for any job, any condition. Bluesign products with branded fabrics.

PRO Overview

Men's Pro Winter Jacket 8600005



Men's Pro Warming Jacket 8600003



Men's Pro Warming Vest 8600010



Men's Pro Shell Jacket 8600004



Men's Pro Softshell Jacket 8600007



Men's Pro Wind Fleece Jacket 8600015



Men's Pro Tech Long Sleeve Tee 8600030



Men's Pro Tech Short Sleeve Tee 8600031



Men's Pro Heavy Graphic Tee 8600033



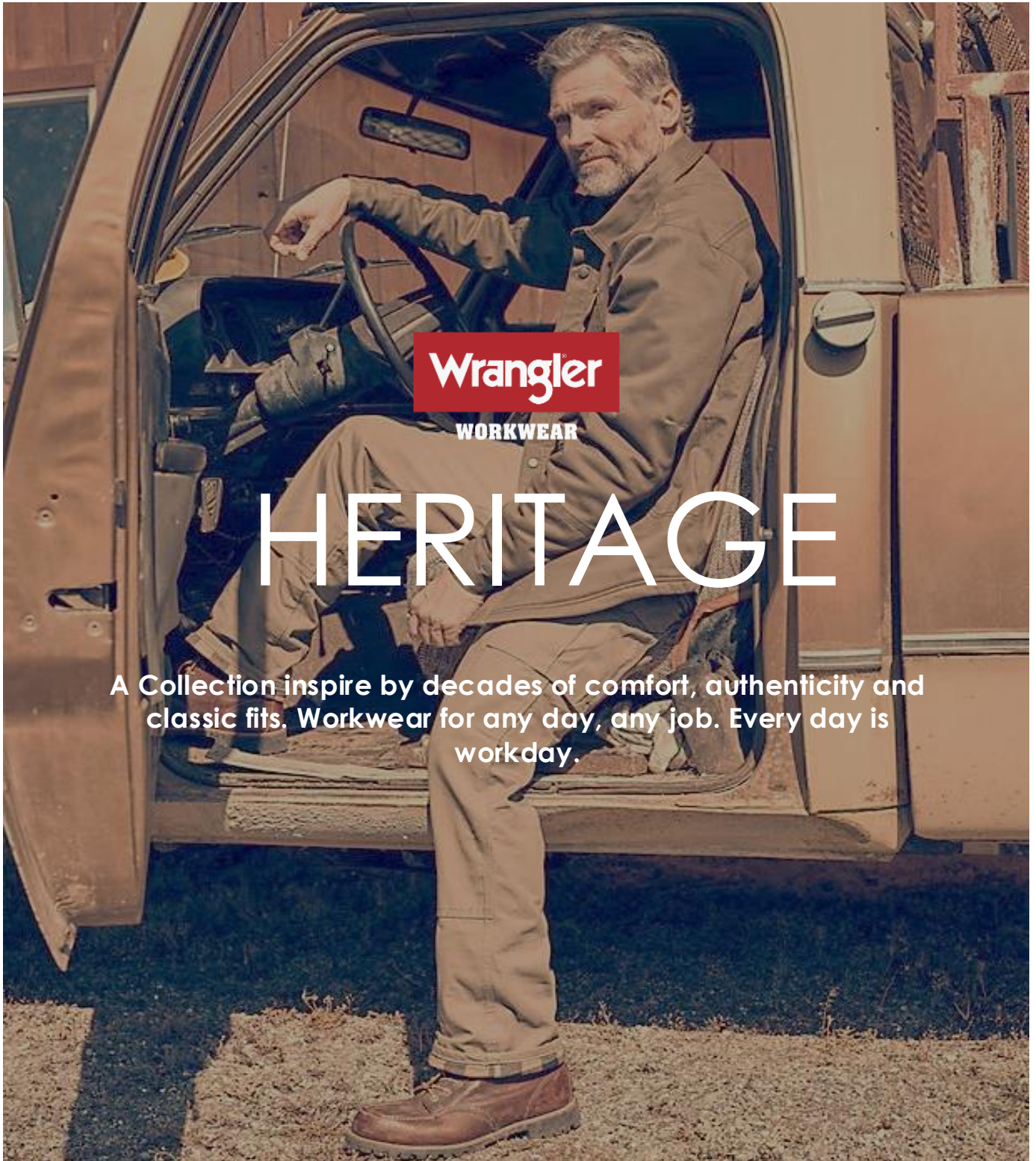
PRO Stretch Universal Trousers 8600047



PRO Stretch Holster Trousers 8600053



Heritage Overview



Wrangler
WORKWEAR

HERITAGE

A Collection inspired by decades of comfort, authenticity and classic fits. Workwear for any day, any job. Every day is workday.

Heritage Overview

Men's Padded Shirt Jacket 8600016



Men's Hybrid Softshell Jacket 8600009



Men's Hybrid Body Warmer 8600012



Men's Denim Shirt 8600026



Men's Graphic Front Tee 8600037



Men's Classic Hoodie 8600040



Unisex Rain Suit Jacket 8600086



Unisex Rain Suit Trousers 8600087



Twill Service Trousers 8600060



Accessories Overview

Mesh Cap 8600088



Twill Cap 8600089



Basic Knitted Beanie 8600091



Rib Knitted Beanie 8600090



Sneaker Work Sock 3-Pack 1 8600097



Work Sock 3-Pack 1 8600100



Size Charts

Men's body measurements for tops

Sizes	XS		S		M		L		XL		2XL		3XL		4XL	
	cm	inch	cm	inch	cm	inch	cm	inch	cm	inch	cm	inch	cm	inch	cm	inch
Chest	88	34,5	91	36	95-99	37,5-39	104-108	41-42,5	112-115	44-45,5	119-123	47-48,5	127-131	50-51,5	135-138	53-54,5
Waist	76	30	79	31	84-86	33-34	91-97	36-38	99-104	39-41	107-112	42-44	114-119	45-47	122-127	48-50
Hip	94	37	98	38,5	102-105	40-41,5	109-114	43-45	117-122	46-48	126-129	49,5-51	133-137	52,5-54	141-145	55,5-57
Inside leg	77	30,5	80	31,5	81	32	84	33	86	34	89	35	89	35	89	35

Men's body measurements for trousers and shorts Width size

Sizes	W26		W27		W28		W29		W30		W31		W32		W33			
	cm	inch	cm	inch	cm	inch	cm	inch	cm	inch	cm	inch	cm	inch	cm	inch		
Waist	66	26	69	27	71	28	74	29	76,5	30	79	31	81,5	32	84-86	33-34		
Hip	81-84	32-33	84-86	33-34	86-89	34-35	89-92	35-36	92-94	36-37	94-97	37-38	97-99	38-39	99-102	39-40		
Sizes	W34		W36		W38		W40		W42		W44		W46		W48		W50	
	cm	inch	cm	inch	cm	inch	cm	inch	cm	inch	cm	inch	cm	inch	cm	inch	cm	inch
Waist	86-89	34-35	91-94	36-37	97-99	38-39	101-104	40-41	107-109	42-43	112-114	44-45	114-117	45-46	122-125	48-49	125-127	49-50
Hip	103-106	40-41	107-109	42-43	112-114	44-45	115-119	45-47	120-122	47-48	122-125	48-49	125-127	49-50	127-130	50-51	130-132	51-52

Men's & Women's body measurements for trousers Length size

Sizes	L30		L32		L34	
	cm	inch	cm	inch	cm	inch
Inside leg	77	30	80	32	81	34

Women's body measurements

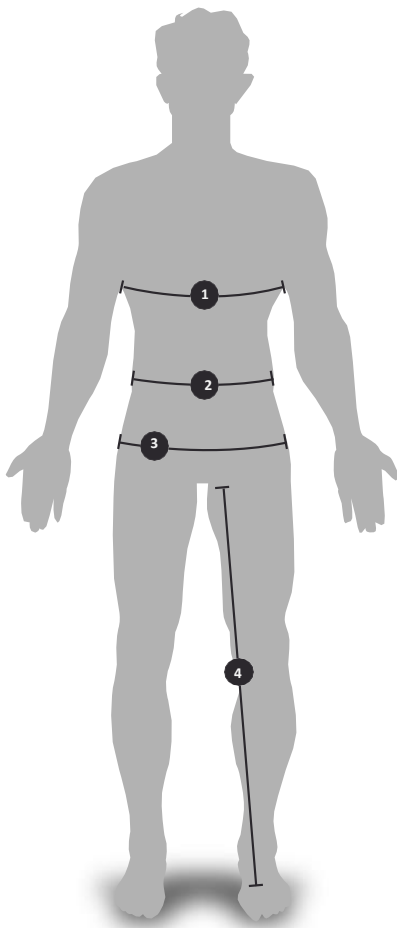
Sizes	XXS		XS		S		M		L		XL		XXL	
	cm	inch	cm	inch	cm	inch	cm	inch	cm	inch	cm	inch	cm	inch
Chest			84	33	88	34,5	92	36	100	39,5	108	42,5	116	45,5
Waist			68	27	72	28,5	76	30	84	33	92	36	100	39
Hip			92	36	96	38	100	39,5	108	42,5	116	45,5	124	48,5
Inside leg			76	30	78	30,5	80	31,5	82	32,5	84	33	86	34

Women's body measurements for trousers and shorts Width size

Sizes	W26		W27		W28		W29		W30		W31		W32		W33	
	cm	inch	cm	inch	cm	inch	cm	inch	cm	inch	cm	inch	cm	inch	cm	inch
Waist	66	26	69	27	71	28	74	29	76,5	30	79	31	81,5	32	84-86	33-34
Hip	86-89	34-35	89-91	35-36	91-94	36-37	94-97	37-38	97-99	38-39	99-102	39-40	102-104	40-41	104-107	41-42
Sizes	W34		W36		W38											
	cm	inch	cm	inch	cm	inch										
Waist	86-89	34-35	91-94	36-37	97-99	38-39										
Hip	107-109	42-43	109-114	43-45	114-119	45-47										



How to measure



1. Chest
2. Waist (at belly button)
3. Hip
4. Inseam

Chest: With arms relaxed at sides, measure around fullest part of chest.

Waist: Measure around natural waistline, smallest part of waist.

Hips: Standing with legs together, measure around fullest part of hips.

Inside leg: Measure inside length of your leg from crotch to bottom of leg



Wrangler

WORKWEAR