



**Wrangler®**

**WORKWEAR**

# SIZE GUIDE



# HOW TO MEASURE

To find the right size, compare a similar garment at home with our measurements. Measure flat across the item - never around.

**Chest width** / Measure across the chest between the lowest point of the arm seams. Multiply with 2.

**Waist width upper wear** / Measure the width at the garment's narrowest point. Multiply with 2.

**Waist width bottom wear** / Place the garment on a flat surface with the front up and measure from side to side. Multiply with 2.

**Bottom width** / Measure from side to side at the bottom of the garment. Multiply with 2.

**Center back length** / Measure the center back from the neck seam to the end of the garment.

**Sleeve length** / Lay the arm flat and measure from the shoulder point to where the cuff ends.

**Seat width** / Place the garment on a flat surface with the front up and measure from side to side at the garment's widest point. Multiply with 2.

**Thigh width** / Measure straight across the width of the leg. Multiply with 2.

**Inseam** / Measure the inside leg from the crotch to the bottom of the trousers.

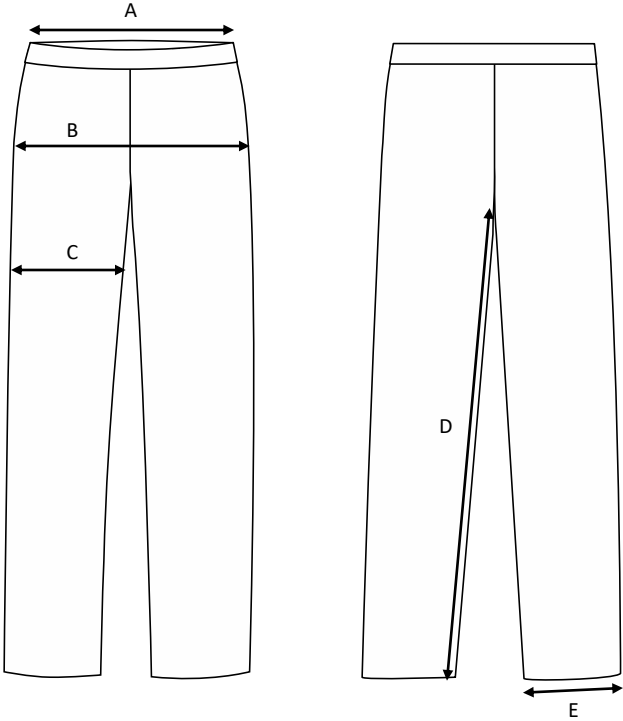
**Foot width** / Measure from side to side at the bottom of the trousers. Multiply with 2.

**Length** / Measure from the highest point of the garment to the end of the garment.

**Collar length** / Open the shirt and lay the collar flat. Measure from the center of the button to the outer edge of the buttonhole.

# Unisex Rainsuit Trousers

Art no: 8600087



	Normal size (cm)	XXS	XS	S	M	L	XL	2XL	3XL	4XL
A	Waist width	34,8	37,8	40,8	43,75	46,8	49,8	52,8	55,8	58,8
B	Seat width	48,8	51,8	54,8	57,75	60,8	63,8	66,8	69,8	72,8
C	Thigh width	32,8	34,5	36,3	38	39,8	41,5	43,3	45	46,8
D	Inseam	78,5	79	80	81	82	83	83,5	84	84,5
E	Bottom width	22,5	23	23,5	24	24,5	25	25,5	26	26,5