



Wrangler®

WORKWEAR

SIZE GUIDE



HOW TO MEASURE

To find the right size, compare a similar garment at home with our measurements. Measure flat across the item - never around.

Chest width / Measure across the chest between the lowest point of the arm seams. Multiply with 2.

Waist width upper wear / Measure the width at the garment's narrowest point. Multiply with 2.

Waist width bottom wear / Place the garment on a flat surface with the front up and measure from side to side. Multiply with 2.

Bottom width / Measure from side to side at the bottom of the garment. Multiply with 2.

Center back length / Measure the center back from the neck seam to the end of the garment.

Sleeve length / Lay the arm flat and measure from the shoulder point to where the cuff ends.

Seat width / Place the garment on a flat surface with the front up and measure from side to side at the garment's widest point. Multiply with 2.

Thigh width / Measure straight across the width of the leg. Multiply with 2.

Inseam / Measure the inside leg from the crotch to the bottom of the trousers.

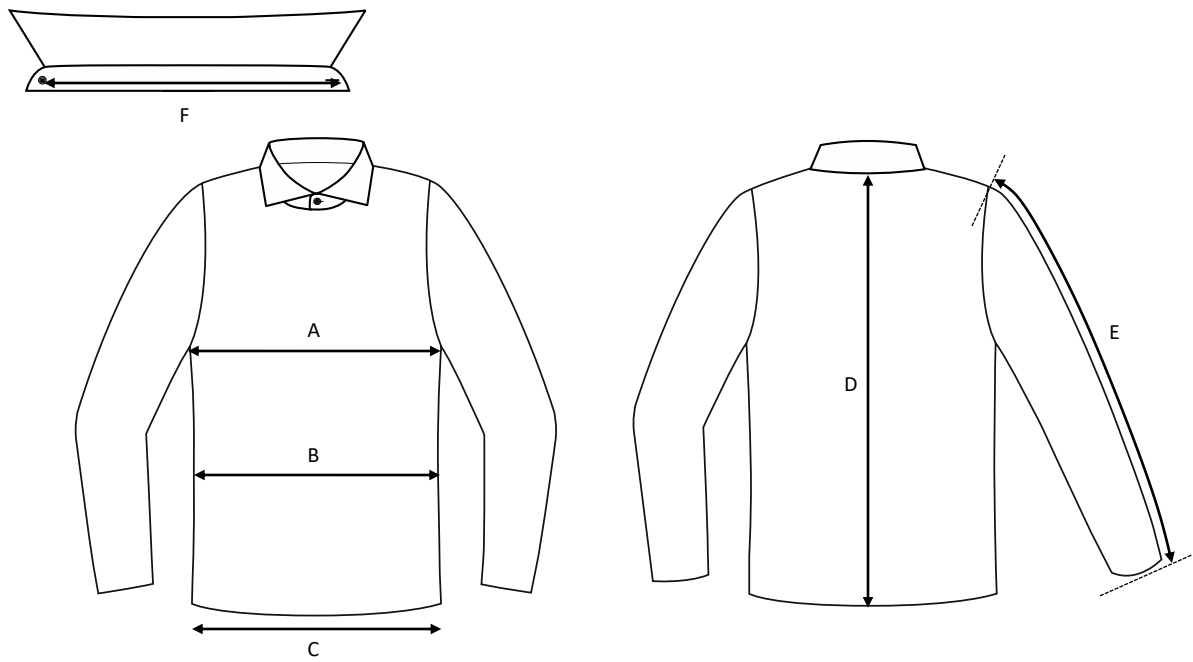
Foot width / Measure from side to side at the bottom of the trousers. Multiply with 2.

Length / Measure from the highest point of the garment to the end of the garment.

Collar length / Open the shirt and lay the collar flat. Measure from the center of the button to the outer edge of the buttonhole.

Men's Denim Shirt

Art no: 8600026



	Normal size (cm)	XXS	XS	S	M	L	XL	2XL	3XL	4XL
A	Chest width	49	52	55	58	61	64	67	70	73
B	Waist width	45,5	48,5	51,5	54,5	57,5	60,5	63,5	66,5	69,5
C	Bottom width	47,5	50,5	53,5	56,5	59,5	62,5	65,5	68,5	71,5
D	Center back length	72	73	75	77	79	81	82	83	84
E	Sleeve length	63	64	65,5	67	68,5	70	71	72	73
F	Collar length	41,8	43,3	44,8	46,3	47,8	49,3	50,8	52,3	53,8