

**T
E
D** **BERNHARDTZ
AT WORK**

Size guide

HOW TO MEASURE

To find the right size, compare a similar garment at home with our measurements. Measure flat across the item - never around.

Chest width / Measure across the chest between the lowest point of the arm seams. Multiply with 2.

Waist width upper wear / Measure the width at the garment's narrowest point. Multiply with 2.

Waist width bottom wear / Place the garment on a flat surface with the front up and measure from side to side. Multiply with 2.

Bottom width / Measure from side to side at the bottom of the garment. Multiply with 2.

Center back length / Measure the center back from the neck seam to the end of the garment.

Sleeve length / Lay the arm flat and measure from the shoulder point to where the cuff ends.

Seat width / Place the garment on a flat surface with the front up and measure from side to side at the garment's widest point. Multiply with 2.

Thigh width / Measure straight across the width of the leg. Multiply with 2.

Inseam / Measure the inside leg from the crotch to the bottom of the trousers.

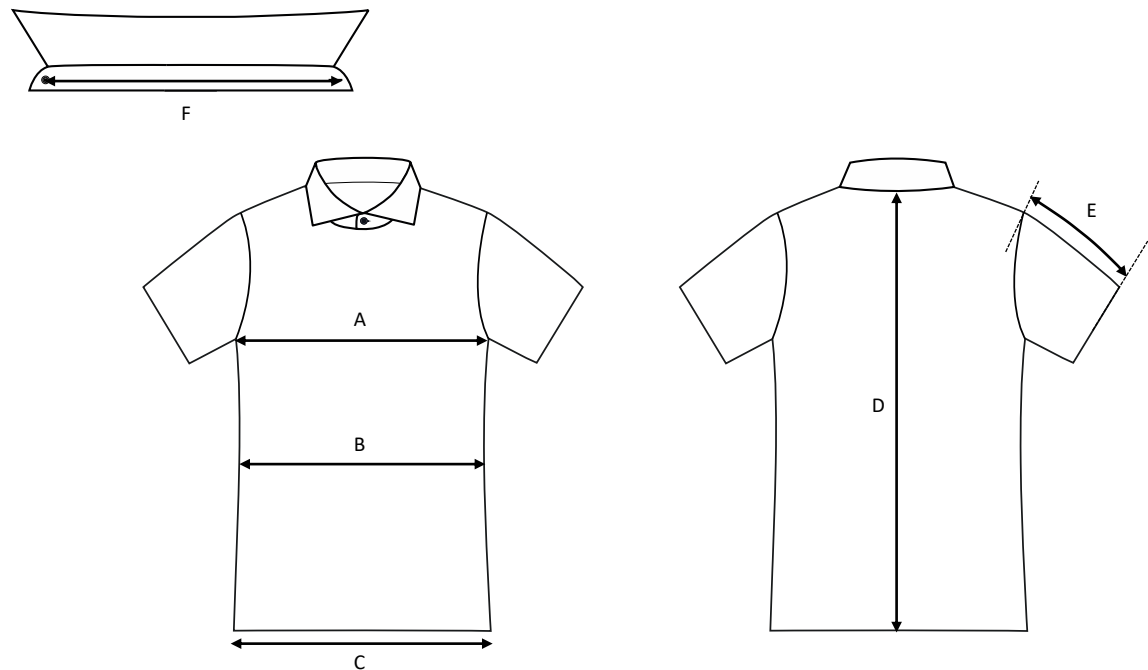
Foot width / Measure from side to side at the bottom of the trousers. Multiply with 2.

Length / Measure from the highest point of the garment to the end of the garment.

Collar length / Open the shirt and lay the collar flat. Measure from the center of the button to the outer edge of the buttonhole.

Men's shirt Jens, short sleeve / Regular fit / Cotton / Twill

Art no: 5011205



	Normal size (cm)	XS	S	M	L	XL	2XL	3XL	4XL	5XL	6XL
A	Chest width	102	108	114	120	126	132	138	144	150	156
B	Waist width	93	99	105	111	117	123	129	135	141	147
C	Bottom width	98	104	110	116	122	128	134	140	146	152
D	Center back length	76	78	80	82	84	86	88	90	92	94
E	Sleeve length	25	25,5	26	26,5	27	27,5	28	28,5	29	29,5
F	Collar length	36	38	40	42	44	46	48	50	52	54