

**T
E
D** BERNHARDTZ
AT WORK

Size guide

HOW TO MEASURE

To find the right size, compare a similar garment at home with our measurements. Measure flat across the item - never around.

Chest width / Measure across the chest between the lowest point of the arm seams. Multiply with 2.

Waist width upper wear / Measure the width at the garment's narrowest point. Multiply with 2.

Waist width bottom wear / Place the garment on a flat surface with the front up and measure from side to side. Multiply with 2.

Bottom width / Measure from side to side at the bottom of the garment. Multiply with 2.

Center back length / Measure the center back from the neck seam to the end of the garment.

Sleeve length / Lay the arm flat and measure from the shoulder point to where the cuff ends.

Seat width / Place the garment on a flat surface with the front up and measure from side to side at the garment's widest point. Multiply with 2.

Thigh width / Measure straight across the width of the leg. Multiply with 2.

Inseam / Measure the inside leg from the crotch to the bottom of the trousers.

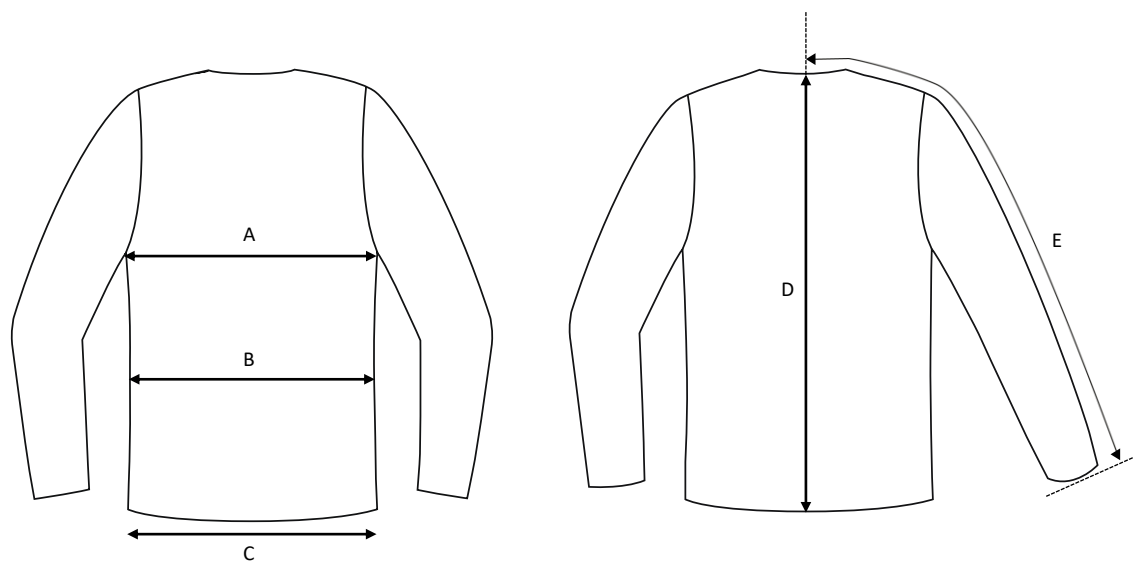
Foot width / Measure from side to side at the bottom of the trousers. Multiply with 2.

Length / Measure from the highest point of the garment to the end of the garment.

Collar length / Open the shirt and lay the collar flat. Measure from the center of the button to the outer edge of the buttonhole.

Ladies cardigan Linda / Zipper / Merino wool & acrylic

Art no: 5011555



	Normal size (cm)	XS	S	M	L	XL	2XL	3XL	4XL	5XL
A	Chest width	80	86	94	100	108	116	124	132	140
B	Waist width	72	80	88	96	104	112	120	128	136
C	Bottom width	70	76	84	90	100	112	120	128	136
D	Center back length	58	60	62	64	66	68	70	70	70
E	Sleeve length	65	67	69	71	72,5	74	75,5	77	78,5