

**T
E
D** BERNHARDTZ
AT WORK

Size guide

HOW TO MEASURE

To find the right size, compare a similar garment at home with our measurements. Measure flat across the item - never around.

Chest width / Measure across the chest between the lowest point of the arm seams. Multiply with 2.

Waist width upper wear / Measure the width at the garment's narrowest point. Multiply with 2.

Waist width bottom wear / Place the garment on a flat surface with the front up and measure from side to side. Multiply with 2.

Bottom width / Measure from side to side at the bottom of the garment. Multiply with 2.

Center back length / Measure the center back from the neck seam to the end of the garment.

Sleeve length / Lay the arm flat and measure from the shoulder point to where the cuff ends.

Seat width / Place the garment on a flat surface with the front up and measure from side to side at the garment's widest point. Multiply with 2.

Thigh width / Measure straight across the width of the leg. Multiply with 2.

Inseam / Measure the inside leg from the crotch to the bottom of the trousers.

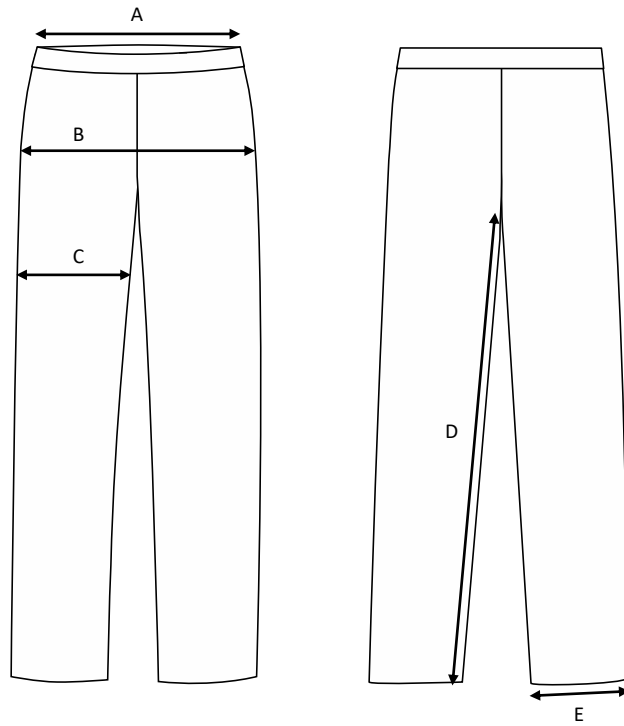
Foot width / Measure from side to side at the bottom of the trousers. Multiply with 2.

Length / Measure from the highest point of the garment to the end of the garment.

Collar length / Open the shirt and lay the collar flat. Measure from the center of the button to the outer edge of the buttonhole.

Ladies functional trousers Lotta / Stretch trousers / Leg pockets

Art no: 5011309



	Normal size (cm)	32	34	36	38	40	42	44	46	48	50	52	54
A	Waist width	70	74	78	82	86	90	94	98	102	106	110	114
B	Seat width	89,5	94	98,5	103	107,5	112	116,5	121	125,5	130	134,5	139
C	Thigh width	56,5	59	61,5	64	66,5	69	71,5	74	76,5	79	81,5	84
D	Inseam	77	78	79	80	81	82	83	84	85	85	85	85
E	Bottom width	34,5	35	35,5	36	36,5	37	37,5	38	38,5	39	39,5	40