

**T  
E  
D** BERNHARDTZ  
AT WORK

# Size guide

## HOW TO MEASURE

To find the right size, compare a similar garment at home with our measurements. Measure flat across the item - never around.

**Chest width** / Measure across the chest between the lowest point of the arm seams. Multiply with 2.

**Waist width upper wear** / Measure the width at the garment's narrowest point. Multiply with 2.

**Waist width bottom wear** / Place the garment on a flat surface with the front up and measure from side to side. Multiply with 2.

**Bottom width** / Measure from side to side at the bottom of the garment. Multiply with 2.

**Center back length** / Measure the center back from the neck seam to the end of the garment.

**Sleeve length** / Lay the arm flat and measure from the shoulder point to where the cuff ends.

**Seat width** / Place the garment on a flat surface with the front up and measure from side to side at the garment's widest point. Multiply with 2.

**Thigh width** / Measure straight across the width of the leg. Multiply with 2.

**Inseam** / Measure the inside leg from the crotch to the bottom of the trousers.

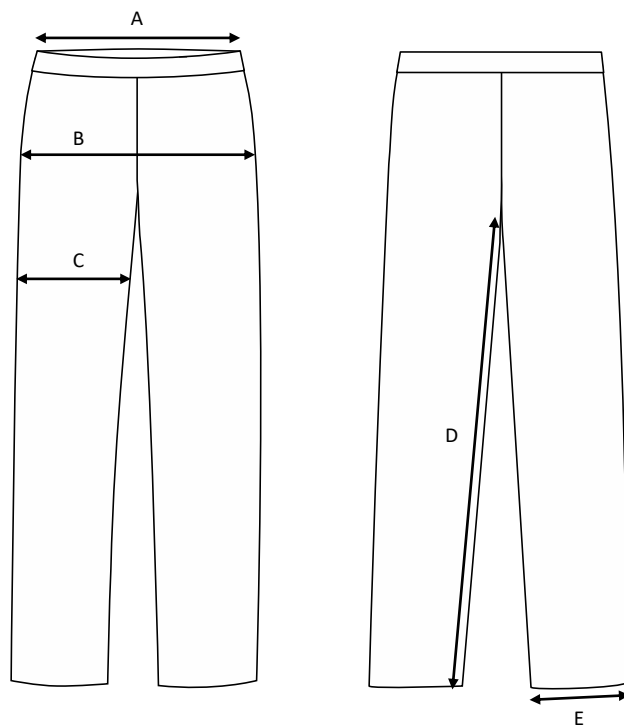
**Foot width** / Measure from side to side at the bottom of the trousers. Multiply with 2.

**Length** / Measure from the highest point of the garment to the end of the garment.

**Collar length** / Open the shirt and lay the collar flat. Measure from the center of the button to the outer edge of the buttonhole.

# Men's servicetrousers Joel / Legpockets / Cotton & polyester

Art no: 5011306



	Normal size (cm)	44	46	48	50	52	54	56	58	60	62	64
A	Waist width	77	81	85	89	93	97	101	105	109	113	117
B	Seat width	98	102	106	110	114	118	122	126	130	134	138
C	Thigh width	61,1	63,4	65,7	68	70,3	72,6	74,9	77,2	79,5	81,8	84,1
D	Inseam	79	80	81	82	83	84	85	86	86	86	86
E	Bottom width	38,5	39	39,5	40	40,5	41	41,5	42	42,5	43	43,5