

**T
E
D** BERNHARDTZ
AT WORK



Size guide

HOW TO MEASURE

To find the right size, compare a similar garment at home with our measurements. Measure flat across the item - never around.

Chest width / Measure across the chest between the lowest point of the arm seams. Multiply with 2.

Waist width upper wear / Measure the width at the garment's narrowest point. Multiply with 2.

Waist width bottom wear / Place the garment on a flat surface with the front up and measure from side to side. Multiply with 2.

Bottom width / Measure from side to side at the bottom of the garment. Multiply with 2.

Center back length / Measure the center back from the neck seam to the end of the garment.

Sleeve length / Lay the arm flat and measure from the shoulder point to where the cuff ends.

Seat width / Place the garment on a flat surface with the front up and measure from side to side at the garment's widest point. Multiply with 2.

Thigh width / Measure straight across the width of the leg. Multiply with 2.

Inseam / Measure the inside leg from the crotch to the bottom of the trousers.

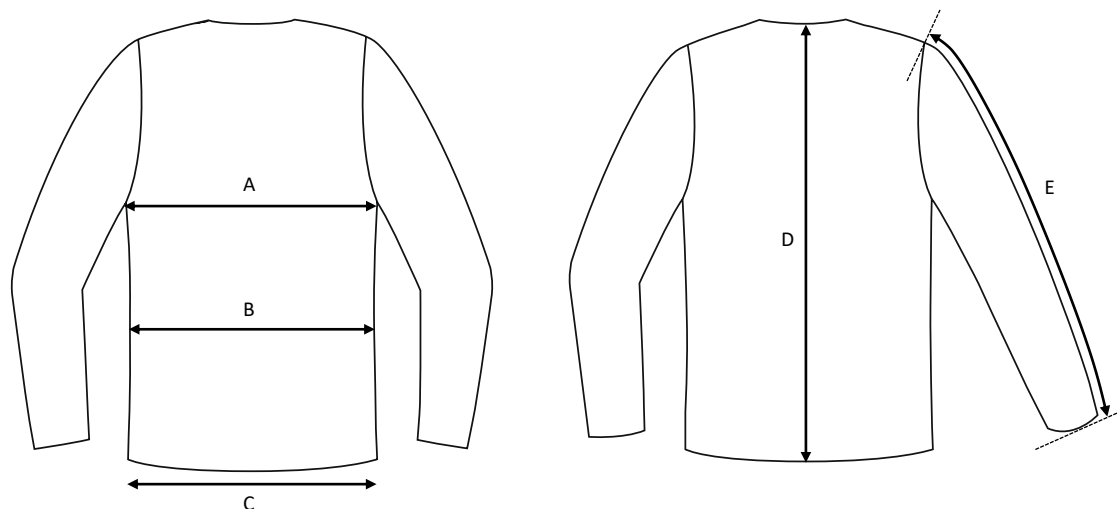
Foot width / Measure from side to side at the bottom of the trousers. Multiply with 2.

Length / Measure from the highest point of the garment to the end of the garment.

Collar length / Open the shirt and lay the collar flat. Measure from the center of the button to the outer edge of the buttonhole.

Nato pullover Vinga / Unisex / V-neck / Wool & acrylic

Art no: 5011550



| | Normal size (cm) | XS | S | M | L | XL | 2XL | 3XL | 4XL | 5XL | 6XL |
|---|--------------------|-----|-----|-----|-----|-----|-----|-----|-----|-----|-----|
| A | Chest width | 100 | 104 | 108 | 112 | 116 | 120 | 124 | 128 | 132 | 136 |
| B | Waist width | 92 | 96 | 100 | 104 | 108 | 112 | 116 | 120 | 124 | 128 |
| C | Bottom width | 68 | 72 | 76 | 80 | 84 | 88 | 92 | 96 | 100 | 104 |
| D | Center back length | 67 | 69 | 71 | 73 | 75 | 77 | 79 | 81 | 83 | 85 |
| E | Sleeve length | 63 | 64 | 65 | 66 | 67 | 68 | 69 | 70 | 71 | 72 |