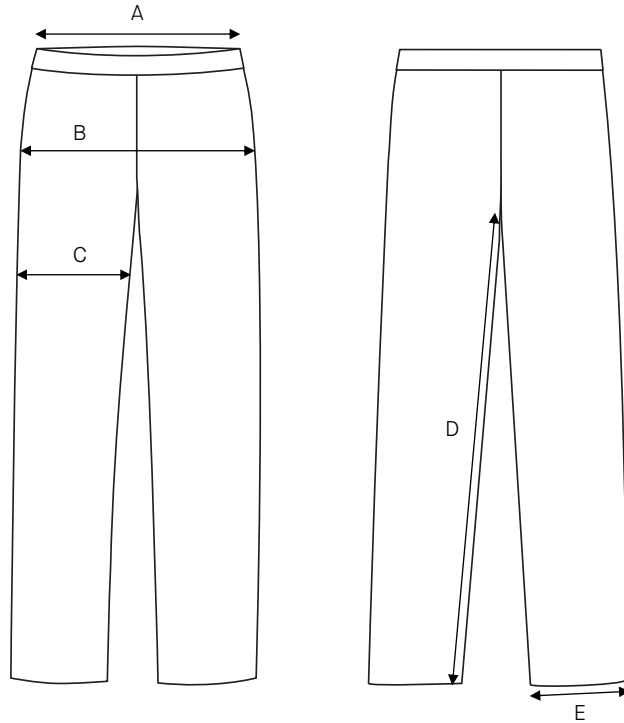


Men's trousers Marco / Regular fit / Woolmix Comfort

Art no: 5011004



	Normal size (cm)	44	46	48	50	52	54	56	58	60	62	64	66
A	Waist width	80	84	88	92	96	100	105	110	116	122	128	134
B	Seat width	96	100	104	108	112	116	120	124	128	132	136	140
C	Thigh width	62,5	64,5	66,5	68,5	70,5	72,5	74,5	76,5	78,5	80,5	82,5	84,5
D	Inseam	79	80	81	82	83	84	85	85	85	85	85	85
E	Bottom width	37,5	38	38,5	39	40	41	42	43	43,5	44	44,5	45

	Long size (cm)	144	146	148	150	152	154	156	158	160	162	164	166
D	Inseam	83	84	85	86	87	88	89	89	89	89	89	89

	Short size (cm)	88	92	96	100	104	108	112	116	120	124	128	132
D	Inseam	75	76	77	78	79	80	81	81	81	81	81	81

	D size (cm)	D88	D92	D96	D100	D104	D108	D112	D116	D120	D124	D128	D132
A	Waist width	86	90	94	98	102	106	111	116	122	128	134	140
D	Inseam	75	76	77	78	79	80	81	81	81	81	81	81

HOW TO MEASURE

To find the right size, compare a similar garment at home with our measurements. Measure flat across the item - never around.

Chest width / Measure across the chest between the lowest point of the arm seams. Multiply with 2.

Waist width upper wear / Measure the width at the garment's narrowest point. Multiply with 2.

Waist width bottom wear / Place the garment on a flat surface with the front up and measure from side to side. Multiply with 2.

Bottom width / Measure from side to side at the bottom of the garment. Multiply with 2.

Center back length / Measure the center back from the neck seam to the end of the garment.

Sleeve length / Lay the arm flat and measure from the shoulder point to where the cuff ends.

Seat width / Place the garment on a flat surface with the front up and measure from side to side at the garment's widest point. Multiply with 2.

Thigh width / Measure straight across the width of the leg. Multiply with 2.

Inseam / Measure the inside leg from the crotch to the bottom of the trousers.

Foot width / Measure from side to side at the bottom of the trousers. Multiply with 2.

Length / Measure from the highest point of the garment to the end of the garment.

Collar length / Open the shirt and lay the collar flat. Measure from the center of the button to the outer edge of the buttonhole.