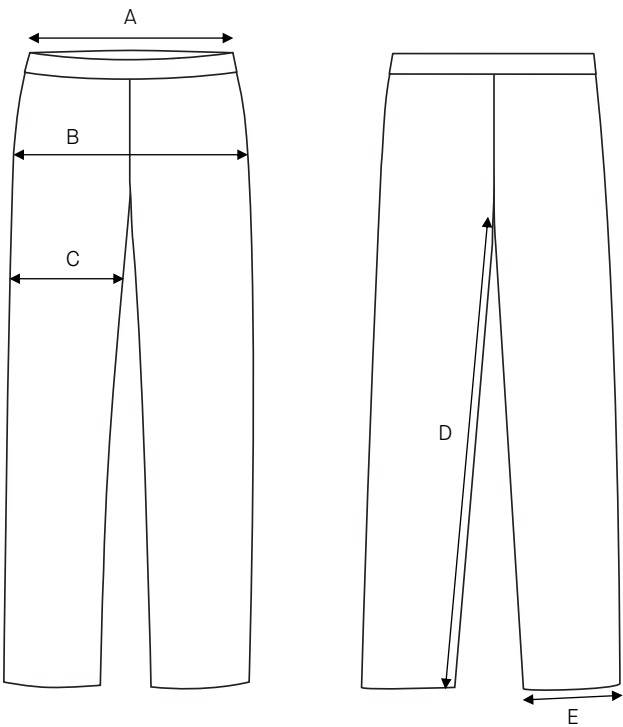


# Men’s trousers Alex / Slim fit / Woolmix Supreme

Art no: 5011101



	Normal size (cm)	44	46	48	50	52	54	56	58
A	Waist width	79,5	83,5	97,5	91,5	95,5	100,5	105,5	110,5
B	Seat width	95	99	103	107	111	115	119	123
C	Thigh width	61,5	63,5	65,5	67,5	69,5	71,5	73,5	75,5
D	Inseam	77	78	79	80	81	82	83	83
E	Bottom width	35	35,5	36	36,5	37,5	38,5	39,5	40,5

	Long size (cm)	144	146	148	150	152	154	156	158
D	Inseam	81	82	83	84	85	86	87	87

	Short size (cm)	88	92	96	100	104	108	112	116
D	Inseam	73	74	75	76	77	78	79	79

	D size (cm)	D88	D92	D96	D100	D104	D108	D112	D116
A	Waist width	85	89	93	97	101	106	111	116
D	Inseam	73	74	75	76	77	78	79	79

## HOW TO MEASURE

To find the right size, compare a similar garment at home with our measurements. Measure flat across the item – never around.

**Chest width** / Measure across the chest between the lowest point of the arm seams. Multiply with 2.

**Waist width upper wear** / Measure the width at the garment's narrowest point. Multiply with 2.

**Waist width bottom wear** / Place the garment on a flat surface with the front up and measure from side to side. Multiply with 2.

**Bottom width** / Measure from side to side at the bottom of the garment. Multiply with 2.

**Center back length** / Measure the center back from the neck seam to the end of the garment.

**Sleeve length** / Lay the arm flat and measure from the shoulder point to where the cuff ends.

**Seat width** / Place the garment on a flat surface with the front up and measure from side to side at the garment's widest point. Multiply with 2.

**Thigh width** / Measure straight across the width of the leg. Multiply with 2.

**Inseam** / Measure the inside leg from the crotch to the bottom of the trousers.

**Foot width** / Measure from side to side at the bottom of the trousers. Multiply with 2.

**Length** / Measure from the highest point of the garment to the end of the garment.

**Collar length** / Open the shirt and lay the collar flat. Measure from the center of the button to the outer edge of the buttonhole.