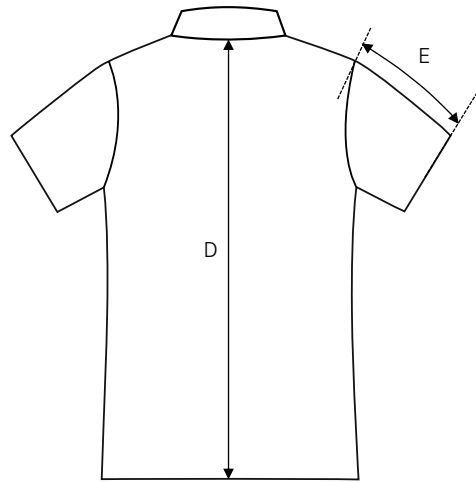
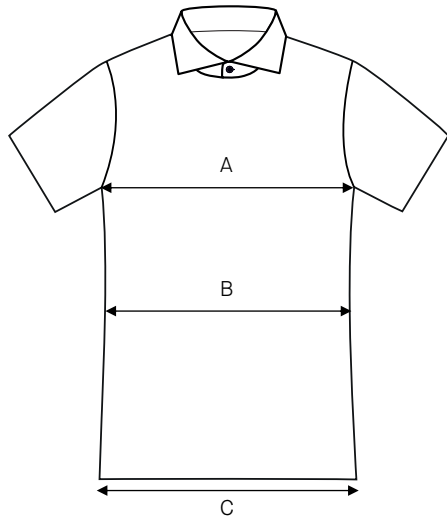
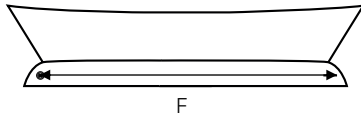


# Men's shirt Steven, short sleeve / Regular fit / Poplin

Art no: 5011201



	Normal size (cm)	XS 35/36	S 37/38	M 39/40	L 41/42	XL 43/44	2XL 45/46	3XL 47/48	4XL 49/50	5XL 51/52	6XL 53/54
A	Chest width	102	108	114	120	126	132	138	144	150	156
B	Waist width	96	102	108	114	120	126	132	138	144	150
C	Bottom width	100	106	112	118	124	130	136	142	144	150
D	Center back length	76	78	80	82	84	86	88	90	92	94
E	Sleeve length	25	25,5	26	26,5	27	27,5	28	28,5	29	29,5
F	Collar length	36	38	40	42	44	46	48	50	52	54

## HOW TO MEASURE

To find the right size, compare a similar garment at home with our measurements. Measure flat across the item - never around.

**Chest width** / Measure across the chest between the lowest point of the arm seams. Multiply with 2.

**Waist width upper wear** / Measure the width at the garment's narrowest point. Multiply with 2.

**Waist width bottom wear** / Place the garment on a flat surface with the front up and measure from side to side. Multiply with 2.

**Bottom width** / Measure from side to side at the bottom of the garment. Multiply with 2.

**Center back length** / Measure the center back from the neck seam to the end of the garment.

**Sleeve length** / Lay the arm flat and measure from the shoulder point to where the cuff ends.

**Seat width** / Place the garment on a flat surface with the front up and measure from side to side at the garment's widest point. Multiply with 2.

**Thigh width** / Measure straight across the width of the leg. Multiply with 2.

**Inseam** / Measure the inside leg from the crotch to the bottom of the trousers.

**Foot width** / Measure from side to side at the bottom of the trousers. Multiply with 2.

**Length** / Measure from the highest point of the garment to the end of the garment.

**Collar length** / Open the shirt and lay the collar flat. Measure from the center of the button to the outer edge of the buttonhole.