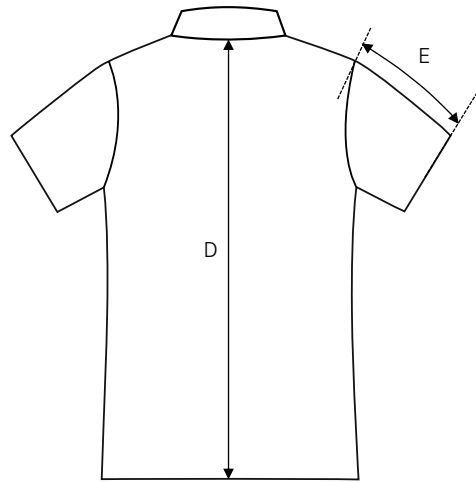
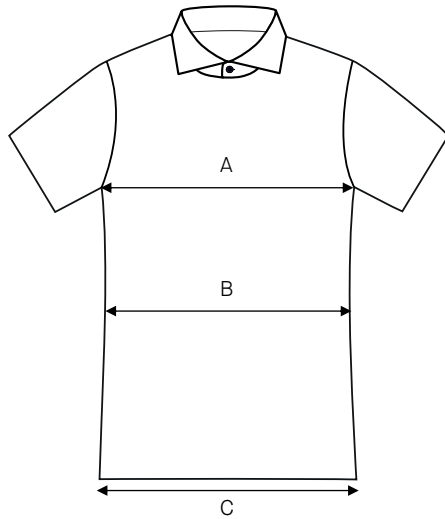
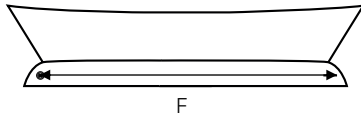


Men's pilot shirt Steven, short sleeve / Regular fit / Poplin

Art no: 5011203



| | Normal size (cm) | XS 35/36 | S 37/38 | M 39/40 | L 41/42 | XL 43/44 | 2XL 45/46 | 3XL 47/48 | 4XL 49/50 | 5XL 51/52 | 6XL 53/54 |
|---|--------------------|-------------|------------|------------|------------|-------------|--------------|--------------|--------------|--------------|--------------|
| A | Chest width | 102 | 108 | 114 | 120 | 126 | 132 | 138 | 144 | 150 | 156 |
| B | Waist width | 96 | 102 | 108 | 114 | 120 | 126 | 132 | 138 | 144 | 150 |
| C | Bottom width | 100 | 106 | 112 | 118 | 124 | 130 | 136 | 142 | 148 | 154 |
| D | Center back length | 76 | 78 | 80 | 82 | 84 | 86 | 88 | 90 | 92 | 94 |
| E | Sleeve length | 25 | 25,5 | 26 | 26,5 | 27 | 27,5 | 28 | 28,5 | 29 | 29,5 |
| F | Collar length | 36 | 38 | 40 | 42 | 44 | 46 | 48 | 50 | 52 | 54 |

HOW TO MEASURE

To find the right size, compare a similar garment at home with our measurements. Measure flat across the item - never around.

Chest width / Measure across the chest between the lowest point of the arm seams. Multiply with 2.

Waist width upper wear / Measure the width at the garment's narrowest point. Multiply with 2.

Waist width bottom wear / Place the garment on a flat surface with the front up and measure from side to side. Multiply with 2.

Bottom width / Measure from side to side at the bottom of the garment. Multiply with 2.

Center back length / Measure the center back from the neck seam to the end of the garment.

Sleeve length / Lay the arm flat and measure from the shoulder point to where the cuff ends.

Seat width / Place the garment on a flat surface with the front up and measure from side to side at the garment's widest point. Multiply with 2.

Thigh width / Measure straight across the width of the leg. Multiply with 2.

Inseam / Measure the inside leg from the crotch to the bottom of the trousers.

Foot width / Measure from side to side at the bottom of the trousers. Multiply with 2.

Length / Measure from the highest point of the garment to the end of the garment.

Collar length / Open the shirt and lay the collar flat. Measure from the center of the button to the outer edge of the buttonhole.