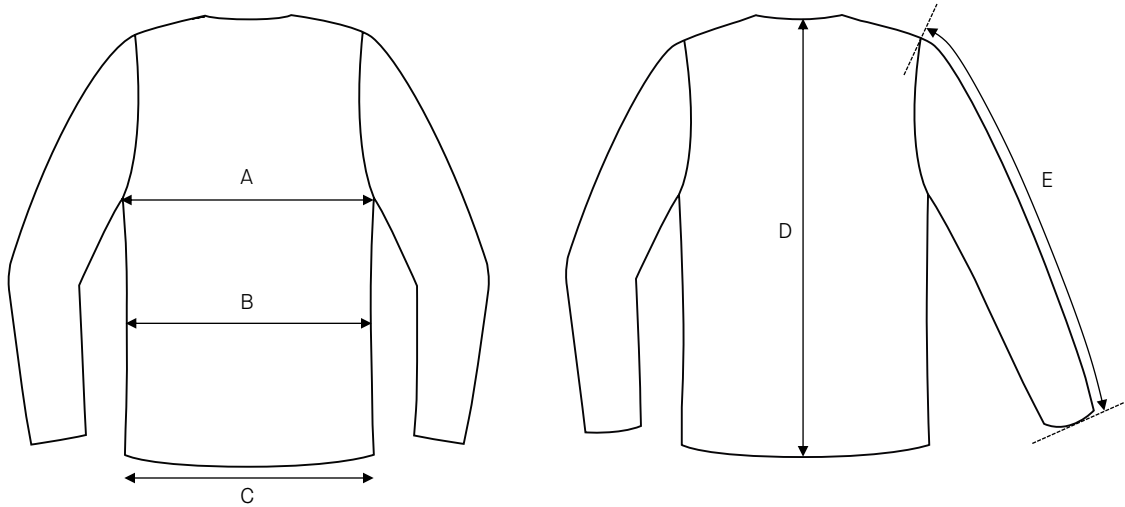


Men's jacket Marcel / Regular fit / Woolmix Comfort

Art no: 5011002



	Normal size (cm)	44	46	48	50	52	54	56	58	60	62	64
A	Chest width	100	104	108	112	116	120	124	128	132	136	140
B	Waist width	92	96	100	104	108	112	117	122	128	134	140
C	Bottom width	102	106	110	114	118	122	126	130	134	138	142
D	Center back length	71	72	73	74	75	76	77	78	78,5	79	79,5
E	Sleeve length	61,5	62,5	63,5	64,5	65,5	66,5	67,5	68,5	69	69,5	70

	Long size (cm)	144	146	148	150	152	154	156	158	160	162	164
D	Center back length	74	75	76	77	78	79	80	81	81,5	82	82,5
E	Sleeve length	64	65	66	67	68	69	70	71	71,5	72	72,5

	Short size (cm)	88	92	96	100	104	108	112	116	120	124	128
D	Center back length	68	69	70	71	72	73	74	75	75,5	76	76,5
E	Sleeve length	59	60	61	62	63	64	65	66	66,5	67	67,5

	D size (cm)	D88	D92	D96	D100	D104	D108	D112	D116	D120	D124	D128
B	Waist width	99	103	107	111	115	119	124	129	135	141	147
D	Center back length	68	69	70	71	72	73	74	75	75,5	76	76,5
E	Sleeve length	59	60	61	62	63	64	65	66	66,5	67	67,5

HOW TO MEASURE

To find the right size, compare a similar garment at home with our measurements. Measure flat across the item - never around.

Chest width / Measure across the chest between the lowest point of the arm seams. Multiply with 2.

Waist width upper wear / Measure the width at the garment's narrowest point. Multiply with 2.

Waist width bottom wear / Place the garment on a flat surface with the front up and measure from side to side. Multiply with 2.

Bottom width / Measure from side to side at the bottom of the garment. Multiply with 2.

Center back length / Measure the center back from the neck seam to the end of the garment.

Sleeve length / Lay the arm flat and measure from the shoulder point to where the cuff ends.

Seat width / Place the garment on a flat surface with the front up and measure from side to side at the garment's widest point. Multiply with 2.

Thigh width / Measure straight across the width of the leg. Multiply with 2.

Inseam / Measure the inside leg from the crotch to the bottom of the trousers.

Foot width / Measure from side to side at the bottom of the trousers. Multiply with 2.

Length / Measure from the highest point of the garment to the end of the garment.

Collar length / Open the shirt and lay the collar flat. Measure from the center of the button to the outer edge of the buttonhole.