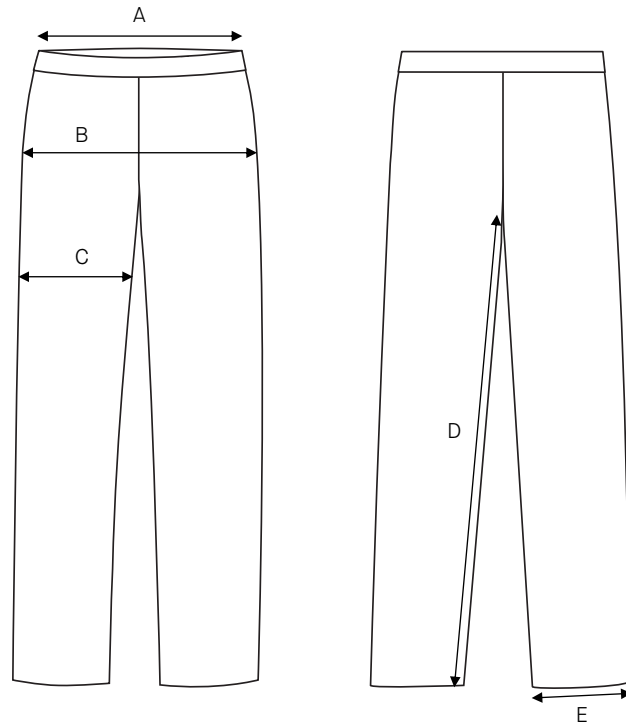


# Ladies trousers Petra / Regular fit / Woolmix Comfort

Art no: 5011010



	Normal size (cm)	32	34	36	38	40	42	44	46	48	50	52	54
A	Waist width	73	76	79	82	86	90	94	98	103	108	114	120
B	Seat width	93	96	99	102	106	110	114	118	123	128	134	140
C	Thigh width	60	61,5	63	64,5	66,5	68,5	70,5	72,5	75	77,5	80,5	83,5
D	Inseam	77	78	79	80	81	82	83	84	85	85	85	85
E	Bottom width	36,5	37	37,5	38	38,5	39	39,5	40	40,5	41	41	41

	Long size (cm)	32L	34L	36L	38L	40L	42L	44L	46L	48L	50L	52L	54L
D	Inseam	81	82	83	84	85	86	87	88	89	89	89	89

	Short size (cm)	16	17	18	19	20	21	22	23	24	25	26	27
D	Inseam	73	74	75	76	77	78	79	80	81	81	81	81

	D size (cm)	D16	D17	D18	D19	D20	D21	D22	D23	D24	D25	D26	D27
A	Waist width	76	79	82	85	89	93	97	101	106	111	117	123
B	Seat width	98	101	104	107	111	115	119	123	128	133	139	145
C	Thigh width	62,5	64	65,5	67	69	71	73	75	77,5	80	83	86
D	Inseam	73	74	75	76	77	78	79	80	81	81	81	81

## HOW TO MEASURE

To find the right size, compare a similar garment at home with our measurements. Measure flat across the item - never around.

**Chest width** / Measure across the chest between the lowest point of the arm seams. Multiply with 2.

**Waist width upper wear** / Measure the width at the garment's narrowest point. Multiply with 2.

**Waist width bottom wear** / Place the garment on a flat surface with the front up and measure from side to side. Multiply with 2.

**Bottom width** / Measure from side to side at the bottom of the garment. Multiply with 2.

**Center back length** / Measure the center back from the neck seam to the end of the garment.

**Sleeve length** / Lay the arm flat and measure from the shoulder point to where the cuff ends.

**Seat width** / Place the garment on a flat surface with the front up and measure from side to side at the garment's widest point. Multiply with 2.

**Thigh width** / Measure straight across the width of the leg. Multiply with 2.

**Inseam** / Measure the inside leg from the crotch to the bottom of the trousers.

**Foot width** / Measure from side to side at the bottom of the trousers. Multiply with 2.

**Length** / Measure from the highest point of the garment to the end of the garment.

**Collar length** / Open the shirt and lay the collar flat. Measure from the center of the button to the outer edge of the buttonhole.