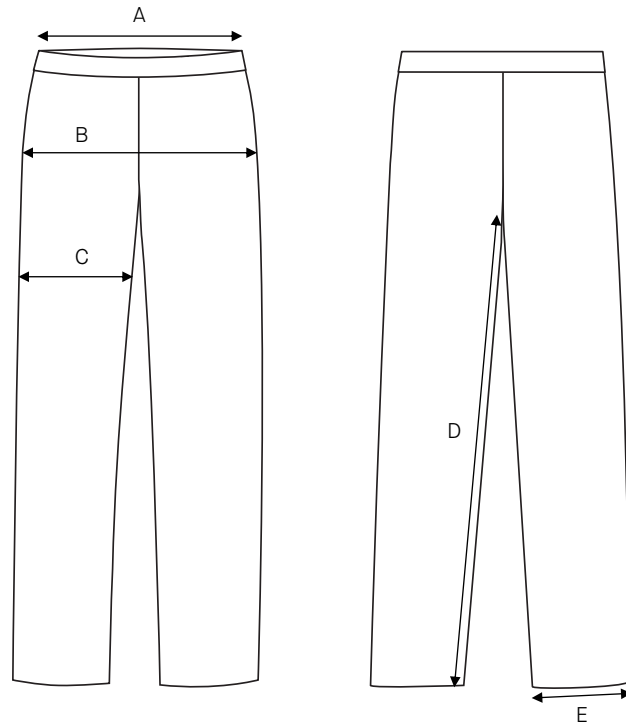


Ladies trousers Klara / Slim fit / Woolmix Supreme

Art no: 5011103



	Normal size (cm)	32	34	36	38	40	42	44	46	48	50	52	54
A	Waist width	72,5	75,5	78,5	81,5	85,5	89,5	93,5	97,5	102,5	107,5	113,5	119,5
B	Seat width	92	95	98	101	105	109	113	117	122	127	132	137
C	Thigh width	59,5	61	62,5	64	66	68	70	72	74,5	77	80	83
D	Inseam	74	75	76	77	78	79	80	81	82	82	82	82
E	Bottom width	34,5	35	35,5	36	36,5	37	37,5	38	38,5	39	39	39

	Long size (cm)	32L	34L	36L	38L	40L	42L	44L	46L	48L	50L	52L	54L
D	Inseam	78	79	80	81	82	83	84	85	86	86	86	86

	Short size (cm)	16	17	18	19	20	21	22	23	24	25	26	27
D	Inseam	70	71	72	73	74	75	76	77	78	78	78	78

	D size (cm)	D16	D17	D18	D19	D20	D21	D22	D23	D24	D25	D26	D27
A	Waist width	75,5	78,5	81,5	84,5	88,5	92,5	96,5	100,5	105,5	110,5	116,5	122,5
B	Seat width	97	100	103	106	110	114	118	122	127	132	137	142
C	Thigh width	62	63,5	65	66,5	68,5	70,5	72,5	74,5	76	79,5	82,5	85,5
D	Inseam	70	71	72	73	74	75	76	77	78	78	78	78

HOW TO MEASURE

To find the right size, compare a similar garment at home with our measurements. Measure flat across the item - never around.

Chest width / Measure across the chest between the lowest point of the arm seams. Multiply with 2.

Waist width upper wear / Measure the width at the garment's narrowest point. Multiply with 2.

Waist width bottom wear / Place the garment on a flat surface with the front up and measure from side to side. Multiply with 2.

Bottom width / Measure from side to side at the bottom of the garment. Multiply with 2.

Center back length / Measure the center back from the neck seam to the end of the garment.

Sleeve length / Lay the arm flat and measure from the shoulder point to where the cuff ends.

Seat width / Place the garment on a flat surface with the front up and measure from side to side at the garment's widest point. Multiply with 2.

Thigh width / Measure straight across the width of the leg. Multiply with 2.

Inseam / Measure the inside leg from the crotch to the bottom of the trousers.

Foot width / Measure from side to side at the bottom of the trousers. Multiply with 2.

Length / Measure from the highest point of the garment to the end of the garment.

Collar length / Open the shirt and lay the collar flat. Measure from the center of the button to the outer edge of the buttonhole.