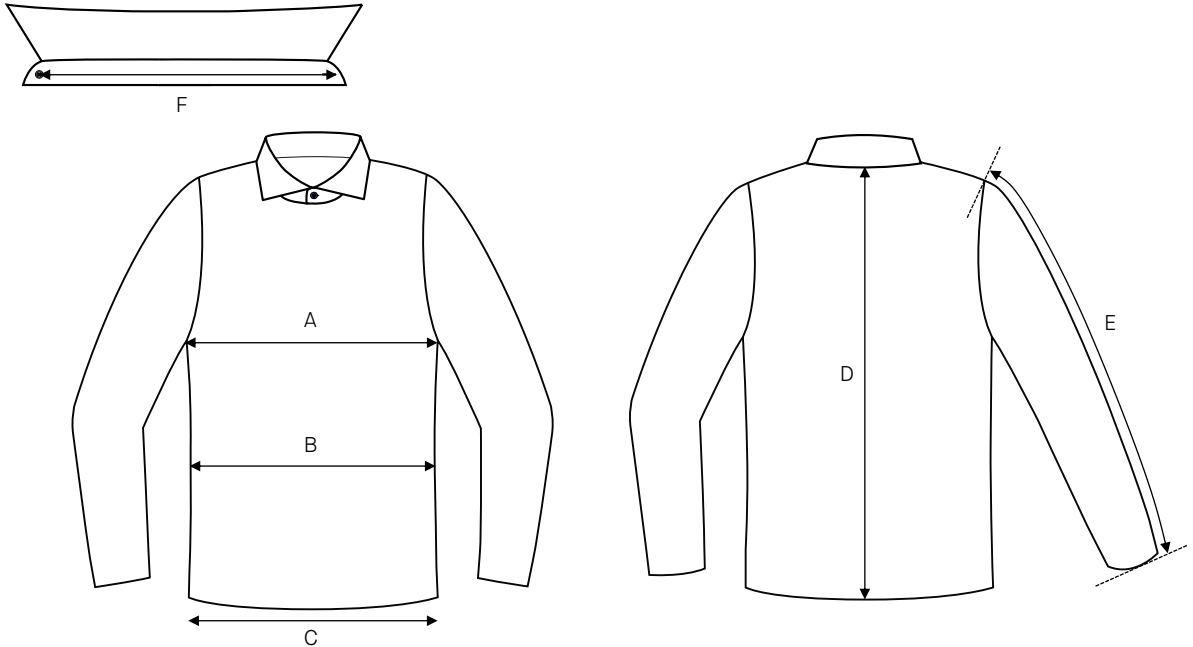


# Ladies pilot shirt Sofia, long sleeve / Regular fit / Poplin

Art no: 5011211



	Normal size (cm)	32	34	36	38	40	42	44	46	48	50	52	54
A	Chest width	90	94	98	102	106	110	114	118	124	130	136	142
B	Waist width	79	83	87	91	95	99	103	107	113	119	125	131
C	Bottom width	94	98	102	106	110	114	118	122	128	134	140	146
D	Center back length	67	68	69	70	71	72	73	74	74	74	74	74
E	Sleeve length	79,6	80,4	81,2	82	82,8	83,6	84,4	85,2	86	86,8	87,6	88,4
F	Collar length	38	38	39,5	39,5	41	41	42,5	42,5	44	44	45,5	45,5

## HOW TO MEASURE

To find the right size, compare a similar garment at home with our measurements. Measure flat across the item - never around.

**Chest width** / Measure across the chest between the lowest point of the arm seams. Multiply with 2.

**Waist width upper wear** / Measure the width at the garment's narrowest point. Multiply with 2.

**Waist width bottom wear** / Place the garment on a flat surface with the front up and measure from side to side. Multiply with 2.

**Bottom width** / Measure from side to side at the bottom of the garment. Multiply with 2.

**Center back length** / Measure the center back from the neck seam to the end of the garment.

**Sleeve length** / Lay the arm flat and measure from the shoulder point to where the cuff ends.

**Seat width** / Place the garment on a flat surface with the front up and measure from side to side at the garment's widest point. Multiply with 2.

**Thigh width** / Measure straight across the width of the leg. Multiply with 2.

**Inseam** / Measure the inside leg from the crotch to the bottom of the trousers.

**Foot width** / Measure from side to side at the bottom of the trousers. Multiply with 2.

**Length** / Measure from the highest point of the garment to the end of the garment.

**Collar length** / Open the shirt and lay the collar flat. Measure from the center of the button to the outer edge of the buttonhole.