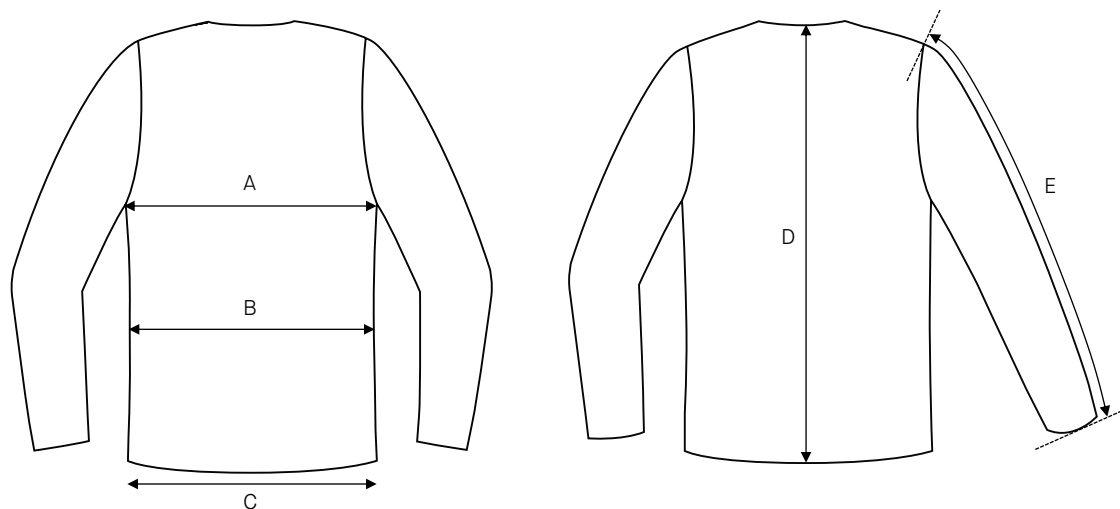


Ladies jacket Nicole / Regular fit / Woolmix Comfort

Art no: 5011008



	Normal size (cm)	30	32	34	36	38	40	42	44	46	48	50	52	54
A	Chest width	84	87	90	93	96	100	104	108	112	117	122	128	134
B	Waist width	74	77	80	83	86	90	94	98	102	107	112	118	124
C	Bottom width	94	97	100	103	106	110	114	118	122	127	132	138	144
D	Center length back	57	57,5	58	58,5	59	59,5	60	60,5	61	61,5	62	62	62
E	Sleeve length	59	59,5	60	60,5	61	61,5	62	62,5	63	63,5	64	64	64

	Long size (cm)	30L	32L	34L	36L	38L	40L	42L	44L	46L	48L	50L	52L	54L
D	Center length back	60	60,5	61	61,5	62	62,5	63	63,5	64	64,5	65	65	65
E	Sleeve length	61,5	62	62,5	63	63,5	64	64,5	65	65,5	66	66,5	66,5	66,5

	Short size (cm)	15	16	17	18	19	20	21	22	23	24	25	26	27
D	Center length back	54	54,5	55	55,5	56	56,5	57	57,5	58	58,5	59	59	59
E	Sleeve length	56,5	57	57,5	58	58,5	59	59,5	60	60,5	61	61,5	61,5	61,5

	D size (cm)	D15	D16	D17	D18	D19	D20	D21	D22	D23	D24	D25	D26	D27
B	Waist width	79	82	85	88	91	95	99	103	107	112	117	123	129
D	Center length back	54	54,5	55	55,5	56	56,5	57	57,5	58	58,5	59	59	59
E	Sleeve length	56,5	57	57,5	58	58,5	59	59,5	60	60,5	61	61,5	61,5	61,5

HOW TO MEASURE

To find the right size, compare a similar garment at home with our measurements. Measure flat across the item - never around.

Chest width / Measure across the chest between the lowest point of the arm seams. Multiply with 2.

Waist width upper wear / Measure the width at the garment's narrowest point. Multiply with 2.

Waist width bottom wear / Place the garment on a flat surface with the front up and measure from side to side. Multiply with 2.

Bottom width / Measure from side to side at the bottom of the garment. Multiply with 2.

Center back length / Measure the center back from the neck seam to the end of the garment.

Sleeve length / Lay the arm flat and measure from the shoulder point to where the cuff ends.

Seat width / Place the garment on a flat surface with the front up and measure from side to side at the garment's widest point. Multiply with 2.

Thigh width / Measure straight across the width of the leg. Multiply with 2.

Inseam / Measure the inside leg from the crotch to the bottom of the trousers.

Foot width / Measure from side to side at the bottom of the trousers. Multiply with 2.

Length / Measure from the highest point of the garment to the end of the garment.

Collar length / Open the shirt and lay the collar flat. Measure from the center of the button to the outer edge of the buttonhole.