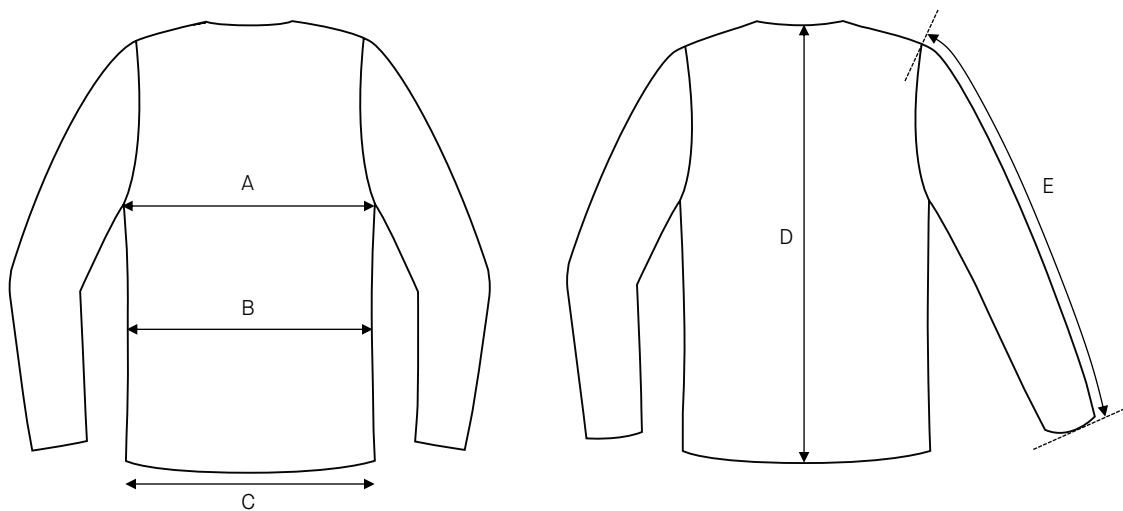


# Ladies jacket Estelle / Slim fit / Woolmix Core

Art no: 5011055



	Normal size (cm)	30	32	34	36	38	40	42	44	46	48	50
A	Chest width	82	85	88	91	94	98	102	106	110	115	120
B	Waist width	72	75	78	81	84	88	92	96	100	105	110
C	Bottom width	94	97	100	103	106	110	114	118	122	127	132
D	Center back length	60	60,5	61	61,5	62	62,5	63	63,5	64	64	64
E	Sleeve length	59	59,5	60	60,5	61	61,5	62	62,5	63	63	63

	Long size (cm)	30L	32L	34L	36L	38L	40L	42L	44L	46L	48L	50L
D	Center back length	63	63,5	64	64,5	65	65,5	66	66,5	67	67	67
E	Sleeve length	61,5	62	62,5	63	63,5	64	64,5	65	65,5	65,5	65,5

## HOW TO MEASURE

To find the right size, compare a similar garment at home with our measurements. Measure flat across the item – never around.

**Chest width** / Measure across the chest between the lowest point of the arm seams. Multiply with 2.

**Waist width upper wear** / Measure the width at the garment's narrowest point. Multiply with 2.

**Waist width bottom wear** / Place the garment on a flat surface with the front up and measure from side to side. Multiply with 2.

**Bottom width** / Measure from side to side at the bottom of the garment. Multiply with 2.

**Center back length** / Measure the center back from the neck seam to the end of the garment.

**Sleeve length** / Lay the arm flat and measure from the shoulder point to where the cuff ends.

**Seat width** / Place the garment on a flat surface with the front up and measure from side to side at the garment's widest point. Multiply with 2.

**Thigh width** / Measure straight across the width of the leg. Multiply with 2.

**Inseam** / Measure the inside leg from the crotch to the bottom of the trousers.

**Foot width** / Measure from side to side at the bottom of the trousers. Multiply with 2.

**Length** / Measure from the highest point of the garment to the end of the garment.

**Collar length** / Open the shirt and lay the collar flat. Measure from the center of the button to the outer edge of the buttonhole.