

**T
E
D** **BERNHARDTZ
AT WORK**



Size guide

HOW TO MEASURE

To find the right size, compare a similar garment at home with our measurements. Measure flat across the item - never around.

Chest width / Measure across the chest between the lowest point of the arm seams. Multiply with 2.

Waist width upper wear / Measure the width at the garment's narrowest point. Multiply with 2.

Waist width bottom wear / Place the garment on a flat surface with the front up and measure from side to side. Multiply with 2.

Bottom width / Measure from side to side at the bottom of the garment. Multiply with 2.

Center back length / Measure the center back from the neck seam to the end of the garment.

Sleeve length / Lay the arm flat and measure from the shoulder point to where the cuff ends.

Seat width / Place the garment on a flat surface with the front up and measure from side to side at the garment's widest point. Multiply with 2.

Thigh width / Measure straight across the width of the leg. Multiply with 2.

Inseam / Measure the inside leg from the crotch to the bottom of the trousers.

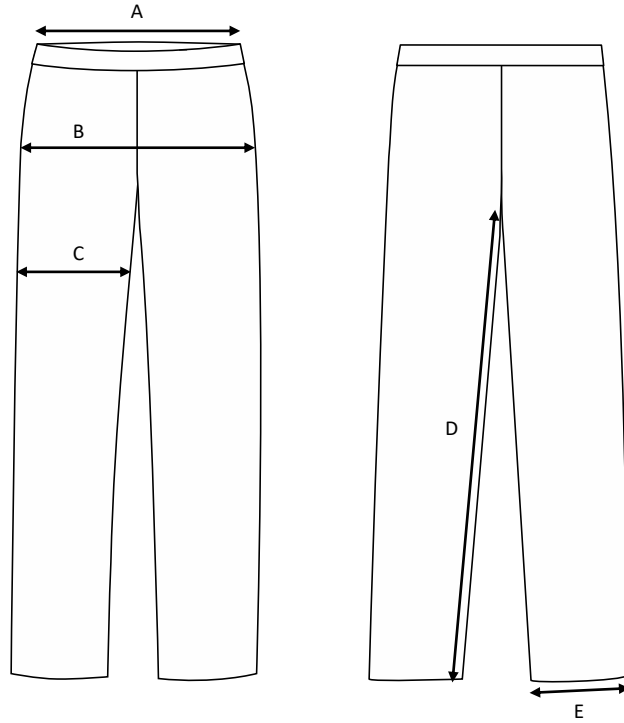
Foot width / Measure from side to side at the bottom of the trousers. Multiply with 2.

Length / Measure from the highest point of the garment to the end of the garment.

Collar length / Open the shirt and lay the collar flat. Measure from the center of the button to the outer edge of the buttonhole.

Men's worker chino Paul / Stretch / Cotton & polyester / Twill

Art no: 5010075, 5010076



	Normal size (cm)	27	28	29	30	31	32	33	34	36	38	40	42	44
A	Waist width	72	74,5	77	79,5	82	84,5	87	89,5	94,5	99,5	104,5	109,5	114,5
B	Seat width	96	98,5	101	103,5	106	108,5	111	113,5	118,5	123,5	128,5	133,5	138,5
C	Thigh width	55	56,5	58	59,5	61	62,5	64	65,5	68,5	71,5	74,5	77,5	80,5
D	Inseam 30 length	77	77	77	77	77	77	77	77	77	77	77	77	77
D	Inseam 32 length	81	81	81	81	81	81	81	81	81	81	81	81	81
D	Inseam 34 length	85	85	85	85	85	85	85	85	85	85	85	85	85
D	Inseam 36 length	89	89	89	89	89	89	89	89	89	89	89	89	89
E	Bottom width	31	32	33	34	35	36	37	38	40	42	44	44	44