

**T
E
D** BERNHARDTZ
AT WORK



Size guide

HOW TO MEASURE

To find the right size, compare a similar garment at home with our measurements. Measure flat across the item - never around.

Chest width / Measure across the chest between the lowest point of the arm seams. Multiply with 2.

Waist width upper wear / Measure the width at the garment's narrowest point. Multiply with 2.

Waist width bottom wear / Place the garment on a flat surface with the front up and measure from side to side. Multiply with 2.

Bottom width / Measure from side to side at the bottom of the garment. Multiply with 2.

Center back length / Measure the center back from the neck seam to the end of the garment.

Sleeve length / Lay the arm flat and measure from the shoulder point to where the cuff ends.

Seat width / Place the garment on a flat surface with the front up and measure from side to side at the garment's widest point. Multiply with 2.

Thigh width / Measure straight across the width of the leg. Multiply with 2.

Inseam / Measure the inside leg from the crotch to the bottom of the trousers.

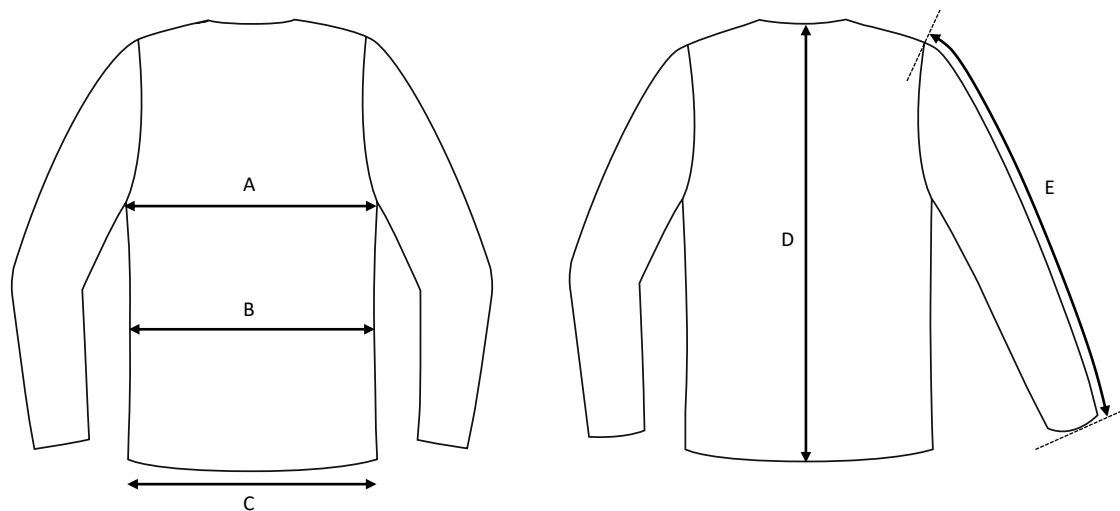
Foot width / Measure from side to side at the bottom of the trousers. Multiply with 2.

Length / Measure from the highest point of the garment to the end of the garment.

Collar length / Open the shirt and lay the collar flat. Measure from the center of the button to the outer edge of the buttonhole.

Men's pullover Patric / V-neck / Cotton & acrylic

Art no: 5010051



	Normal size (cm)	XS	S	M	L	XL	2XL	3XL	4XL	5XL	6XL
A	Chest width	94	100	106	112	118	124	130	136	142	148
B	Waist width	86	92	98	104	110	116	122	128	134	140
C	Bottom width	62	68	74	80	86	92	98	104	110	116
D	Center back length	67	69	71	73	75	77	79	81	83	85
E	Sleeve length	62	63	64	65	66	67	68	69	70	71