

**T
E
D** **BERNHARDTZ
AT WORK**

Size guide

HOW TO MEASURE

To find the right size, compare a similar garment at home with our measurements. Measure flat across the item - never around.

Chest width / Measure across the chest between the lowest point of the arm seams. Multiply with 2.

Waist width upper wear / Measure the width at the garment's narrowest point. Multiply with 2.

Waist width bottom wear / Place the garment on a flat surface with the front up and measure from side to side. Multiply with 2.

Bottom width / Measure from side to side at the bottom of the garment. Multiply with 2.

Center back length / Measure the center back from the neck seam to the end of the garment.

Sleeve length / Lay the arm flat and measure from the shoulder point to where the cuff ends.

Seat width / Place the garment on a flat surface with the front up and measure from side to side at the garment's widest point. Multiply with 2.

Thigh width / Measure straight across the width of the leg. Multiply with 2.

Inseam / Measure the inside leg from the crotch to the bottom of the trousers.

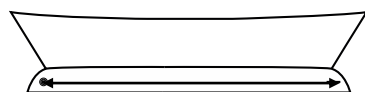
Foot width / Measure from side to side at the bottom of the trousers. Multiply with 2.

Length / Measure from the highest point of the garment to the end of the garment.

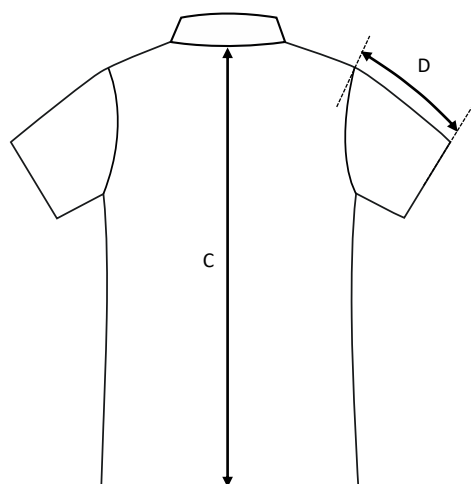
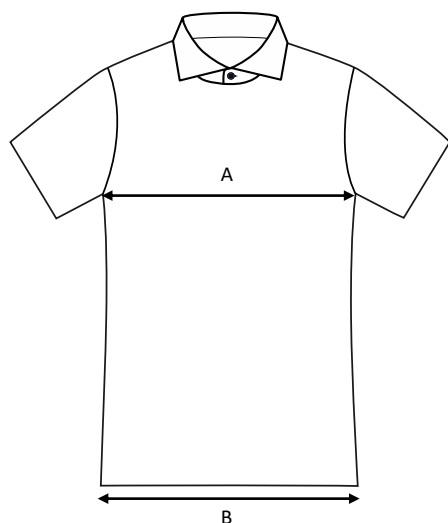
Collar length / Open the shirt and lay the collar flat. Measure from the center of the button to the outer edge of the buttonhole.

Men's polo shirt Marc / Cotton & polyester

Art no: 5010049



E



	Normal size (cm)	XS	S	M	L	XL	2XL	3XL	4XL	5XL	6XL
A	Chest width	92	98	104	110	116	122	128	134	140	146
B	Bottom width	91	97	103	109	115	121	127	133	139	145
C	Center back length	69	71	73	75	77	79	81	83	85	87
D	Sleeve length	20,5	21,5	22,5	23,5	24,5	25,5	26,5	27,5	28,5	29,5
E	Collar length	38	40	42	44	46	48	50	52	54	56