

**T
E
D** BERNHARDTZ
AT WORK

Size guide

HOW TO MEASURE

To find the right size, compare a similar garment at home with our measurements. Measure flat across the item - never around.

Chest width / Measure across the chest between the lowest point of the arm seams. Multiply with 2.

Waist width upper wear / Measure the width at the garment's narrowest point. Multiply with 2.

Waist width bottom wear / Place the garment on a flat surface with the front up and measure from side to side. Multiply with 2.

Bottom width / Measure from side to side at the bottom of the garment. Multiply with 2.

Center back length / Measure the center back from the neck seam to the end of the garment.

Sleeve length / Lay the arm flat and measure from the shoulder point to where the cuff ends.

Seat width / Place the garment on a flat surface with the front up and measure from side to side at the garment's widest point. Multiply with 2.

Thigh width / Measure straight across the width of the leg. Multiply with 2.

Inseam / Measure the inside leg from the crotch to the bottom of the trousers.

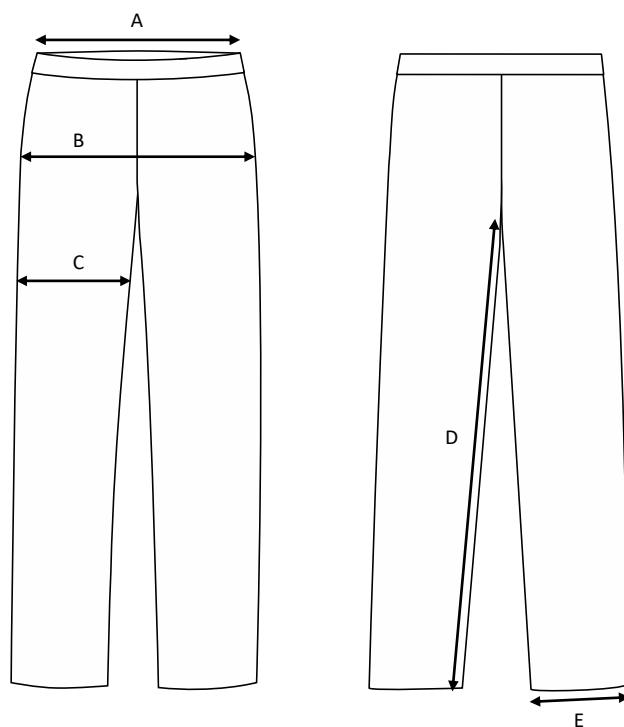
Foot width / Measure from side to side at the bottom of the trousers. Multiply with 2.

Length / Measure from the highest point of the garment to the end of the garment.

Collar length / Open the shirt and lay the collar flat. Measure from the center of the button to the outer edge of the buttonhole.

Ladies worker chino Pia / Stretch / Cotton & polyester / Twill

Art no: 5010077, 5010078



	Normal size (cm)	25	26	27	28	29	30	31	32	33	34	36	38
A	Waist width	72	74,5	77	79,5	82	84,5	87	89,5	92	94,5	99,5	104,5
B	Seat width	95	97,5	100	102,5	105	107,5	110	112,5	115	117,5	122,5	127,5
C	Thigh width	58	59,5	61	62,5	64	65,5	67	68,5	70	71,5	74,5	77,5
D	Inseam 30 length	75	75	75	75	75	75	75	75	75	75	75	75
D	Inseam 32 length	80	80	80	80	80	80	80	80	80	80	80	80
D	Inseam 34 length	85	85	85	85	85	85	85	85	85	85	85	85
D	Inseam 36 length	90	90	90	90	90	90	90	90	90	90	90	90
E	Bottom width	31	32	33	34	35	36	37	38	39	40	40	40