

**T
E
D** **BERNHARDTZ**
AT WORK

Size guide

HOW TO MEASURE

To find the right size, compare a similar garment at home with our measurements. Measure flat across the item - never around.

Chest width / Measure across the chest between the lowest point of the arm seams. Multiply with 2.

Waist width upper wear / Measure the width at the garment's narrowest point. Multiply with 2.

Waist width bottom wear / Place the garment on a flat surface with the front up and measure from side to side. Multiply with 2.

Bottom width / Measure from side to side at the bottom of the garment. Multiply with 2.

Center back length / Measure the center back from the neck seam to the end of the garment.

Sleeve length / Lay the arm flat and measure from the shoulder point to where the cuff ends.

Seat width / Place the garment on a flat surface with the front up and measure from side to side at the garment's widest point. Multiply with 2.

Thigh width / Measure straight across the width of the leg. Multiply with 2.

Inseam / Measure the inside leg from the crotch to the bottom of the trousers.

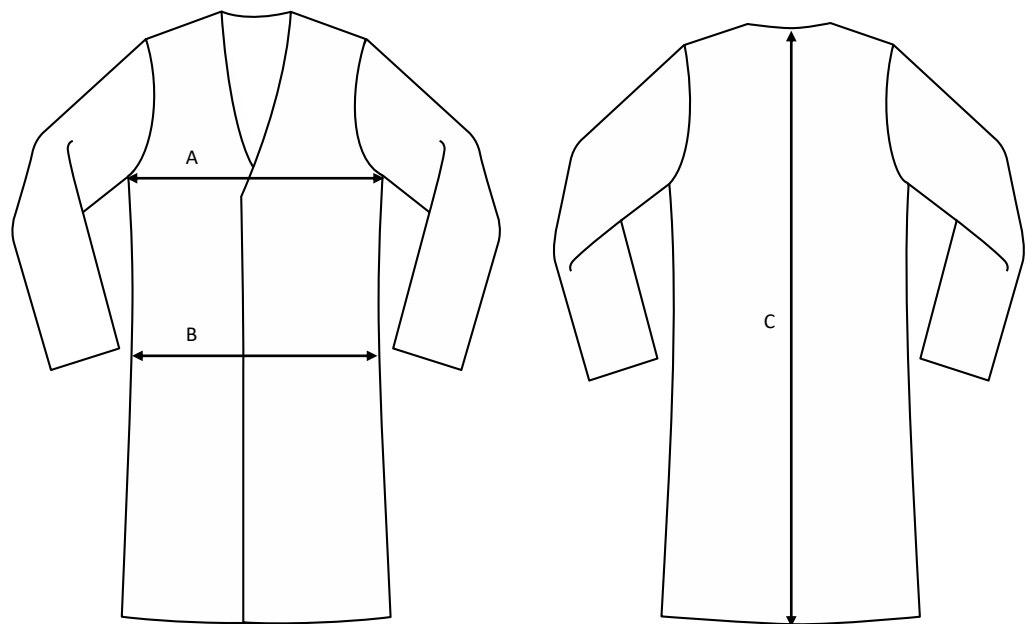
Foot width / Measure from side to side at the bottom of the trousers. Multiply with 2.

Length / Measure from the highest point of the garment to the end of the garment.

Collar length / Open the shirt and lay the collar flat. Measure from the center of the button to the outer edge of the buttonhole.

Ladies wool coat Louise / Wool

Art no: 5011605



	Normal size (cm)	34	36	38	40	42	44	46	48
A	Chest width	104	107	110	114	118	122	126	131
B	Waist width	95	98	101	105	109	113	117	122
C	Length	86	87	88	89	90	91	92	93