

**T
E
D** BERNHARDTZ
AT WORK

Size guide

HOW TO MEASURE

To find the right size, compare a similar garment at home with our measurements. Measure flat across the item - never around.

Chest width / Measure across the chest between the lowest point of the arm seams. Multiply with 2.

Waist width upper wear / Measure the width at the garment's narrowest point. Multiply with 2.

Waist width bottom wear / Place the garment on a flat surface with the front up and measure from side to side. Multiply with 2.

Bottom width / Measure from side to side at the bottom of the garment. Multiply with 2.

Center back length / Measure the center back from the neck seam to the end of the garment.

Sleeve length / Lay the arm flat and measure from the shoulder point to where the cuff ends.

Seat width / Place the garment on a flat surface with the front up and measure from side to side at the garment's widest point. Multiply with 2.

Thigh width / Measure straight across the width of the leg. Multiply with 2.

Inseam / Measure the inside leg from the crotch to the bottom of the trousers.

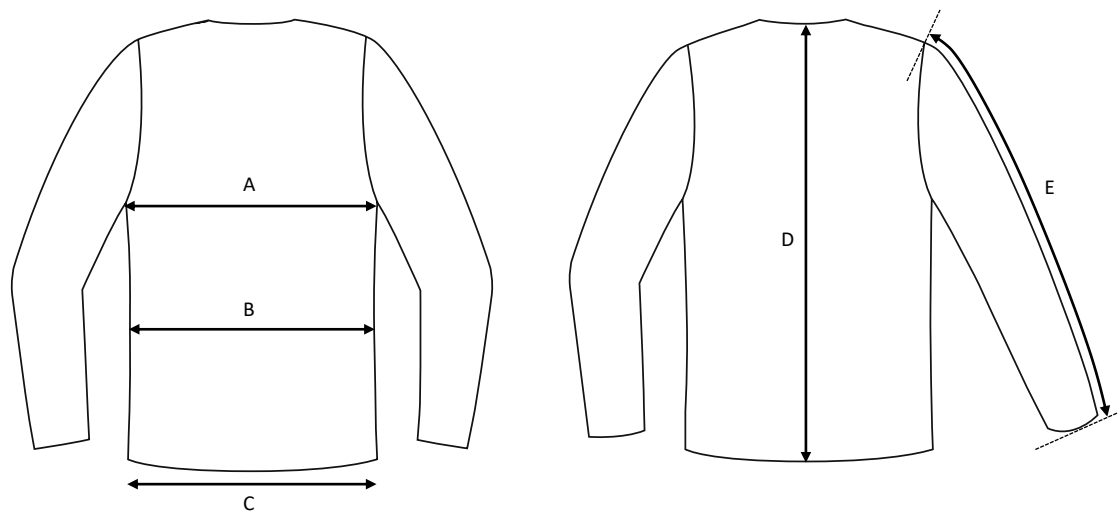
Foot width / Measure from side to side at the bottom of the trousers. Multiply with 2.

Length / Measure from the highest point of the garment to the end of the garment.

Collar length / Open the shirt and lay the collar flat. Measure from the center of the button to the outer edge of the buttonhole.

Ladies pullover Kaja / V-neck / Cotton & acrylic

Art no: 5010052



| | Normal size (cm) | XS | S | M | L | XL | 2XL | 3XL | 4XL | 5XL | 6XL | 7XL |
|---|--------------------|----|----|----|----|-----|-----|-----|-----|-----|-----|-----|
| A | Chest width | 78 | 84 | 90 | 96 | 102 | 108 | 114 | 120 | 126 | 132 | 138 |
| B | Waist width | 74 | 80 | 86 | 92 | 98 | 104 | 110 | 116 | 122 | 128 | 134 |
| C | Bottom width | 68 | 74 | 80 | 86 | 92 | 98 | 104 | 110 | 116 | 122 | 128 |
| D | Center back length | 60 | 62 | 64 | 66 | 68 | 70 | 72 | 74 | 76 | 78 | 80 |
| E | Sleeve length | 61 | 62 | 63 | 64 | 65 | 66 | 67 | 68 | 69 | 70 | 71 |