

**T  
E  
D** **BERNHARDTZ**  
**AT WORK**

# Size guide

## HOW TO MEASURE

To find the right size, compare a similar garment at home with our measurements. Measure flat across the item - never around.

**Chest width** / Measure across the chest between the lowest point of the arm seams. Multiply with 2.

**Waist width upper wear** / Measure the width at the garment's narrowest point. Multiply with 2.

**Waist width bottom wear** / Place the garment on a flat surface with the front up and measure from side to side. Multiply with 2.

**Bottom width** / Measure from side to side at the bottom of the garment. Multiply with 2.

**Center back length** / Measure the center back from the neck seam to the end of the garment.

**Sleeve length** / Lay the arm flat and measure from the shoulder point to where the cuff ends.

**Seat width** / Place the garment on a flat surface with the front up and measure from side to side at the garment's widest point. Multiply with 2.

**Thigh width** / Measure straight across the width of the leg. Multiply with 2.

**Inseam** / Measure the inside leg from the crotch to the bottom of the trousers.

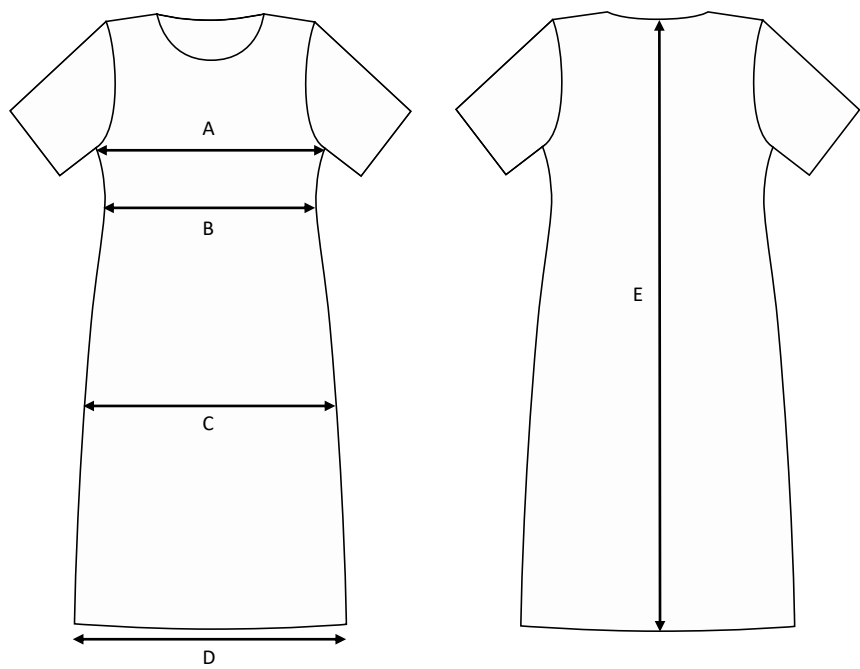
**Foot width** / Measure from side to side at the bottom of the trousers. Multiply with 2.

**Length** / Measure from the highest point of the garment to the end of the garment.

**Collar length** / Open the shirt and lay the collar flat. Measure from the center of the button to the outer edge of the buttonhole.

# Dress Amelia / Regular fit / Woolmix Comfort

Art no: 5011015



	Normal size (cm)	32	34	36	38	40	42	44	46	48	50	52	54
A	Chest width	80	84	88	92	96	100	104	108	112	116	120	124
B	Waist width	76	80	84	88	92	96	100	104	108	112	116	120
C	Seat width	90	94	98	102	106	110	114	118	122	126	130	134
D	Bottom width	99,5	103,5	107,5	111,5	115,5	119,5	123,5	127,5	131,5	135,5	139,5	143,5
E	Length	95	96	97	98	99	100	101	102	103	104	105	106