

**T  
E  
D** **BERNHARDTZ**  
**AT WORK**

# Size guide

## HOW TO MEASURE

To find the right size, compare a similar garment at home with our measurements. Measure flat across the item - never around.

**Chest width** / Measure across the chest between the lowest point of the arm seams. Multiply with 2.

**Waist width upper wear** / Measure the width at the garment's narrowest point. Multiply with 2.

**Waist width bottom wear** / Place the garment on a flat surface with the front up and measure from side to side. Multiply with 2.

**Bottom width** / Measure from side to side at the bottom of the garment. Multiply with 2.

**Center back length** / Measure the center back from the neck seam to the end of the garment.

**Sleeve length** / Lay the arm flat and measure from the shoulder point to where the cuff ends.

**Seat width** / Place the garment on a flat surface with the front up and measure from side to side at the garment's widest point. Multiply with 2.

**Thigh width** / Measure straight across the width of the leg. Multiply with 2.

**Inseam** / Measure the inside leg from the crotch to the bottom of the trousers.

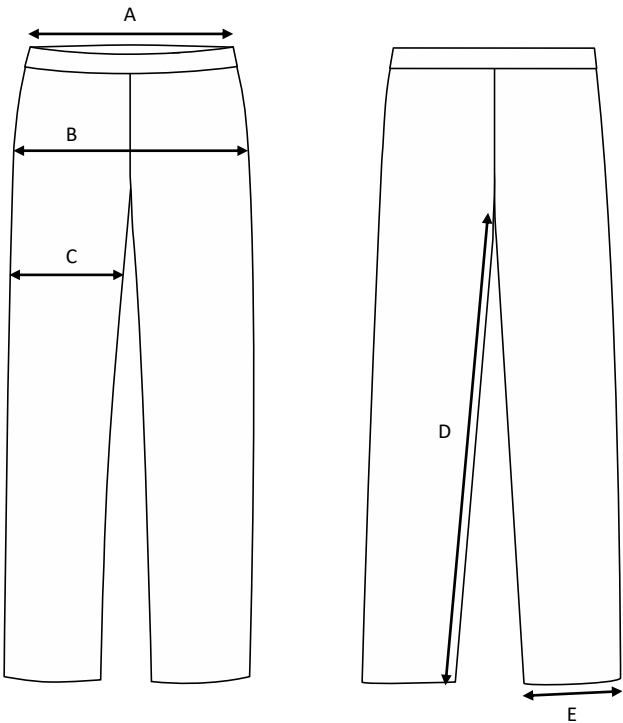
**Foot width** / Measure from side to side at the bottom of the trousers. Multiply with 2.

**Length** / Measure from the highest point of the garment to the end of the garment.

**Collar length** / Open the shirt and lay the collar flat. Measure from the center of the button to the outer edge of the buttonhole.

# Men’s trousers Alex / Slim fit / Woolmix Comfort

Art no: 5011003



	Normal size (cm)	44	46	48	50	52	54	56	58
A	Waist width	79	83	87	91	95	100	105	110
B	Seat width	94	98	102	106	110	114	118	122
C	Thigh width	61	63	65	67	69	71	73	75
D	Inseam	78	79	80	81	82	83	84	84
E	Bottom width	34,5	35	35,5	36	37	38	39	40

	Long size (cm)	144	146	148	150	152	154	156	158
D	Inseam	82	83	84	85	86	87	88	88

	Short size (cm)	88	92	96	100	104	108	112	116
D	Inseam	74	75	76	77	78	79	80	80

	D size (cm)	D88	D92	D96	D100	D104	D108	D112	D116
A	Waist width	85	89	93	97	101	106	111	116
D	Inseam	74	75	76	77	78	79	80	80