

**T  
E  
D** **BERNHARDTZ  
AT WORK**



# **Size guide**

## HOW TO MEASURE

To find the right size, compare a similar garment at home with our measurements. Measure flat across the item - never around.

**Chest width** / Measure across the chest between the lowest point of the arm seams. Multiply with 2.

**Waist width upper wear** / Measure the width at the garment's narrowest point. Multiply with 2.

**Waist width bottom wear** / Place the garment on a flat surface with the front up and measure from side to side. Multiply with 2.

**Bottom width** / Measure from side to side at the bottom of the garment. Multiply with 2.

**Center back length** / Measure the center back from the neck seam to the end of the garment.

**Sleeve length** / Lay the arm flat and measure from the shoulder point to where the cuff ends.

**Seat width** / Place the garment on a flat surface with the front up and measure from side to side at the garment's widest point. Multiply with 2.

**Thigh width** / Measure straight across the width of the leg. Multiply with 2.

**Inseam** / Measure the inside leg from the crotch to the bottom of the trousers.

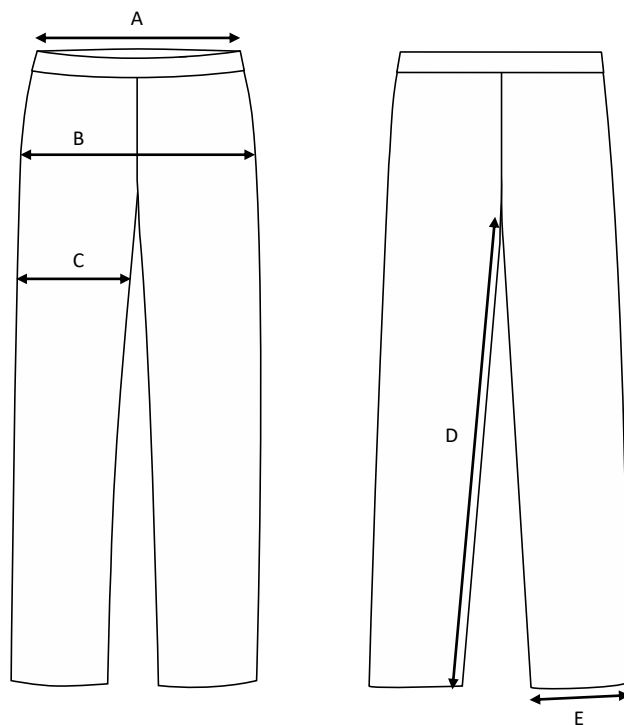
**Foot width** / Measure from side to side at the bottom of the trousers. Multiply with 2.

**Length** / Measure from the highest point of the garment to the end of the garment.

**Collar length** / Open the shirt and lay the collar flat. Measure from the center of the button to the outer edge of the buttonhole.

# Ladies servicetrousers Maya / Cotton & polyester

Art no: 5011305



	Normal size (cm)	32	34	36	38	40	42	44	46	48	50	52	54
A	Waist width	72	75	78	81	85	89	93	97	101	105	109	113
B	Seat width	96	99	102	105	109	113	117	121	125	129	133	137
C	Thigh width	59,6	61,4	63,2	65	67,3	69,6	71,9	74,2	76,5	78,8	81,1	83,4
D	Inseam	77	78	79	80	81	82	83	84	85	85	85	85
E	Bottom width	36,5	37	37,5	38	38,5	39	39,5	40	40,5	41	41,5	42